

Reliable. Accurate. Efficient.

Maxi-Cap™ | Platinum



**Machine pictured included configurable options*

Oliver™
Innovate. Build. Repeat.

Maxi-Cap™ Platinum features:

Operating control

- ▶ Built-in touchscreen, control platform (PLC) provides control of airflow, deck speed, eccentric speed, feed rate, and ability to save and load recipes
- ▶ Integrated E-STOP circuit
- ▶ Most precise adjustments on the market to fine tune your separation

Ease of use

- ▶ Save and recall multiple recipes (such as automatic cleanout), through the PLC touchscreen interface
- ▶ Separate air system for operation is not required
- ▶ Dynamic controls are adjustable while machine is in operation, including: deck tilt, airflow, eccentric speed, and product feed rate

Reliability

- ▶ Over 90 years of experience in gravity table engineering and manufacturing
- ▶ UL and CUL approved electrical cabinets
- ▶ Post purchase training and machine service packages available
- ▶ Spare parts are available upon order

Performance

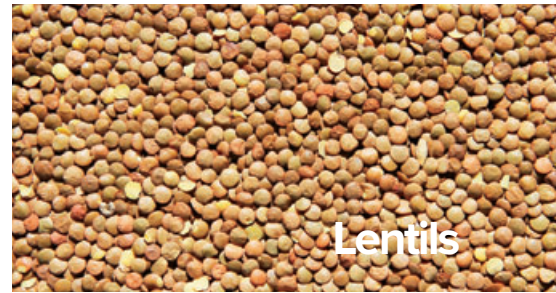
- ▶ Rectangular deck design with custom overcover and undercover, allows for maximum product separation time
- ▶ Reduced machine setup and cleanout time
- ▶ Efficient air zone control from initial stratification through final discharge for optimal separation performance
- ▶ Counterbalanced for smooth operation, with low noise at operator level (88db)

Configurations

- ▶ Integration with plant SCADA is available
- ▶ Modular deck makes for ease of maintenance and quick changeover from product to product and deck to deck
- ▶ Options include: discharge hopper, partial or full dust hoods, vibratory feeder, deck configurations, recipe development, stainless steel contact points, and control packages



Pinto beans



Lentils



Cotton



Soybeans



Peas



Corn/popcorn



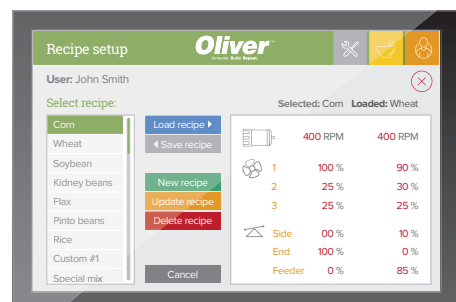
Wheat

Specifications

Machine model ▶	3600	4800
Height	98" (249 cm)	104" (264 cm)
Width	111" (282 cm)	123" (312 cm)
Length	180" (457 cm)	216" (549 cm)
Weight	6,400 lbs (2,903 kg)	8,200 lbs (3,719 kg)
Deck area	57" x 142" (145 cm x 361 cm)	69" x 178" (145 cm x 361 cm)
With deck hood:		
Height	104" (264 cm)	110" (278 cm)
Weight	7,900 lbs (3,583 kg)	10,000 lbs (4,536 kg)
Amp draw @480/3/60	70 amps	80 amps
Amp draw @240/3/60	110 amps	125 amps
Fan zones	4	5
Fan control	VFDS	VFDS
Warranty	1 year	1 year



Equipment control



Recipe setup & storage

Capacity

Machine model ▶	3600			4800	
Product	Bulk (lb.)	lb./hr.	CFM	lb./hr.	CFM
Corn	56	28,600	22,000	42,900	28,000
Cotton Seed	43	21,000	22,000	31,500	28,000
Lentils	60	21,000	22,000	31,500	28,000
Peas	60	24,800	22,000	37,200	22,000
Pinto Beans	60	22,800	22,000	34,200	28,000
Popcorn	56	21,000	18,000	31,500	22,000
Soybeans	60	27,600	22,000	41,400	28,000
Wheat	60	22,800	18,000	34,200	22,000

Capacities are based on the following assumptions:

1. Machine feed rate
2. Light fraction to be removed is assumed to be 5% or less of total incoming products
3. Vary depending upon the bulk density of the product
4. These capacities are estimates only and products can be tested and confirmed at the Oliver laboratory
5. Capacities may change based on soil size and range

For more product capacities, please contact us.



Proven reliability



Built with the power to perform

What else can your Oliver do? Find out at olivermanufacturing.com.



Oliver™

Innovate. Build. Repeat.

+1 (719) 254-7813

olivermanufacturing.com

27151 Harris Road, La Junta, CO 81050

  @olivermanufacturing

 @OliverMFGCO