

PLATINUM

Gravity Separators


- **Parts List – 3600 PL**

Oliver


Advancing the Science of Separation.

Main Office

17777 US Hwy 50
Rocky Ford, CO USA 81067

 Local: 719.254.7813


Fax: 719.254.6371


 Toll Free: 1.888.254.7813

 International: +1.719.254.7813

Production Unit

27151 Harris Road
La Junta, CO USA 81050

 Local: 719.383.9880

 Toll Free: 1.888.254.7813

General Sales Email: contactus@olivermanufacturing.com

Website: www.olivermanufacturing.com

PLEASE READ THIS BEFORE ORDERING PARTS

When you order parts we need the following information.

1. Your Name
2. Company Name
3. Shipping Address
4. Billing Address
5. Phone Number
6. Machine Model Number
(located on hydraulic control console)
7. Machine Order Number
(located on hydraulic control console)
8. Left Hand or Right Hand
9. Purchase Order Number
10. Parts Required
 - A. Part Number
 - B. Catalog Number
 - C. Drawing Number
 - D. Description
 - E. Quantity

Having the above information ready when you call will help to insure that we ship the right parts to you as quickly and efficiently as possible.

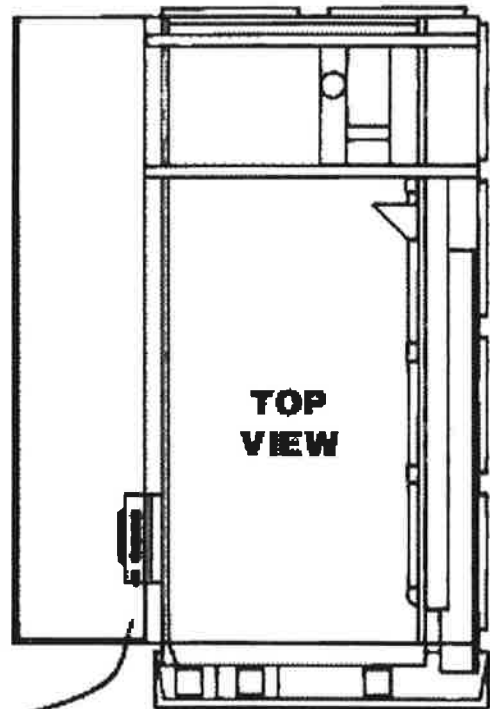
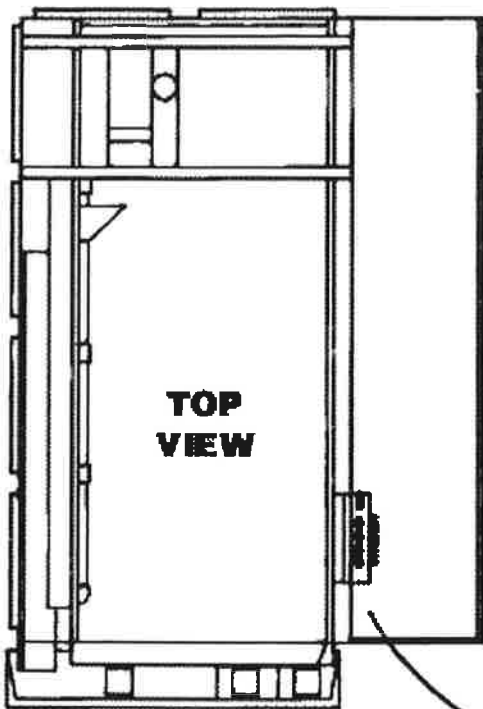
To determine the hand of your machine:

1. Stand on the discharge end of the machine facing the product as it is discharged off the deck.
2. On left hand machines the good product (heavy fraction) is discharged on the left side.
3. On right hand machines the good product (heavy fraction) is discharged on the right side.

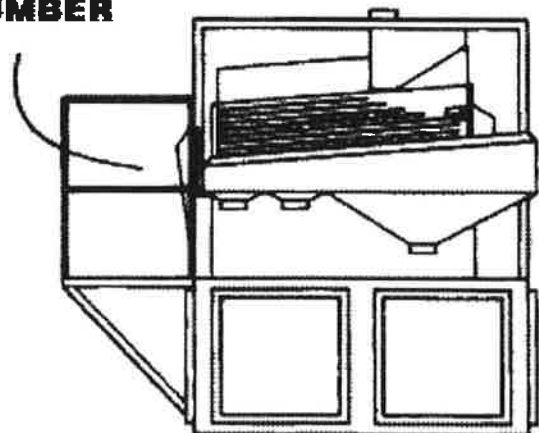
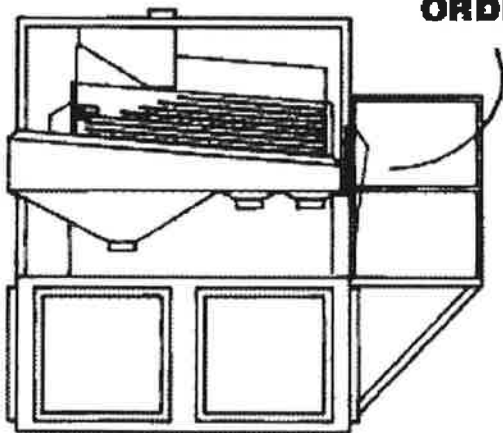
A drawing showing both left and right hand machines is included with this parts list. Please use it as a reference.

Thank you for purchasing Oliver equipment. If you have problems or questions please feel free to call us any-time.

(719) 254-7813



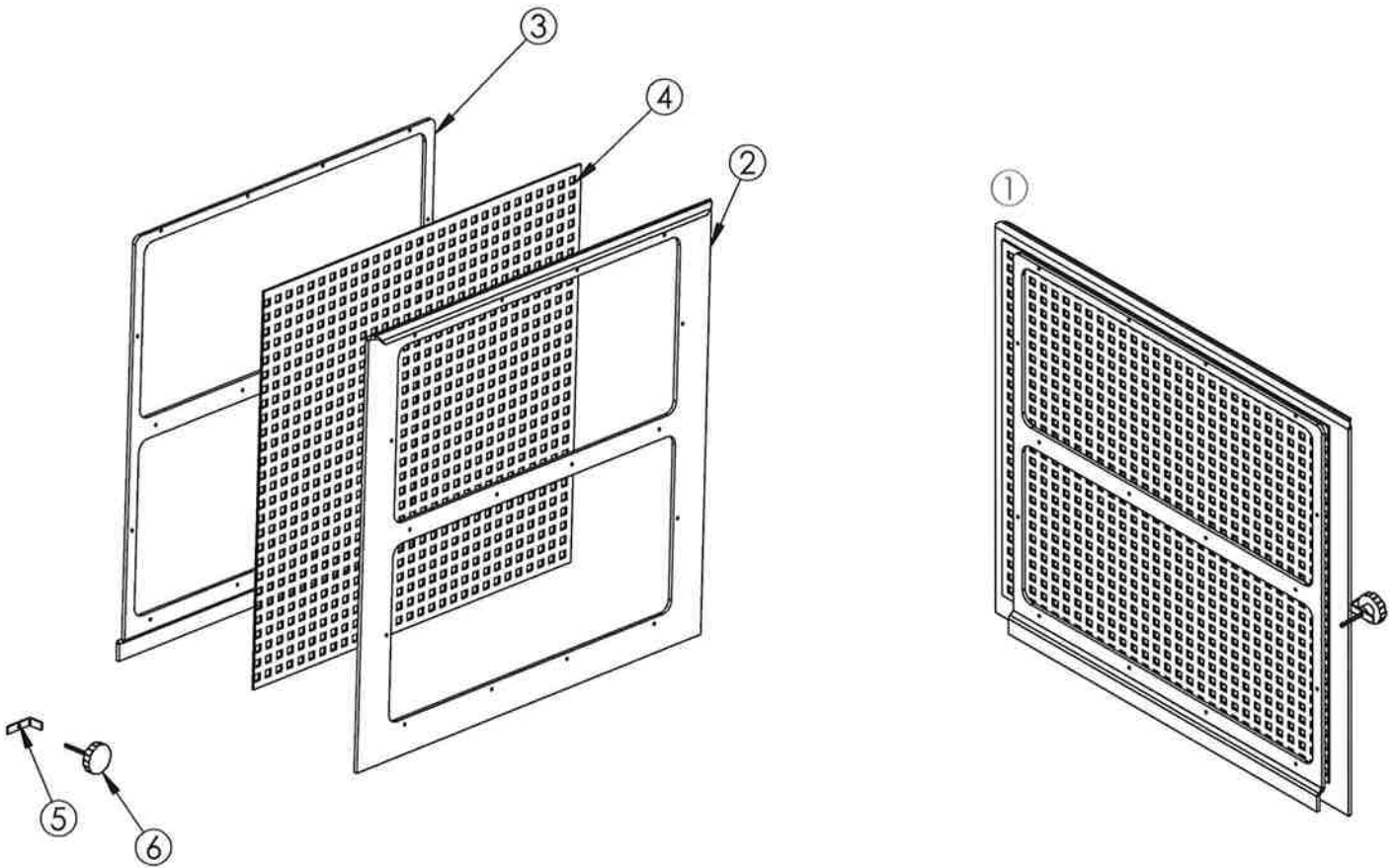
**MODEL NUMBER
ORDER NUMBER**



**DISCHARGE END
LEFT HAND**

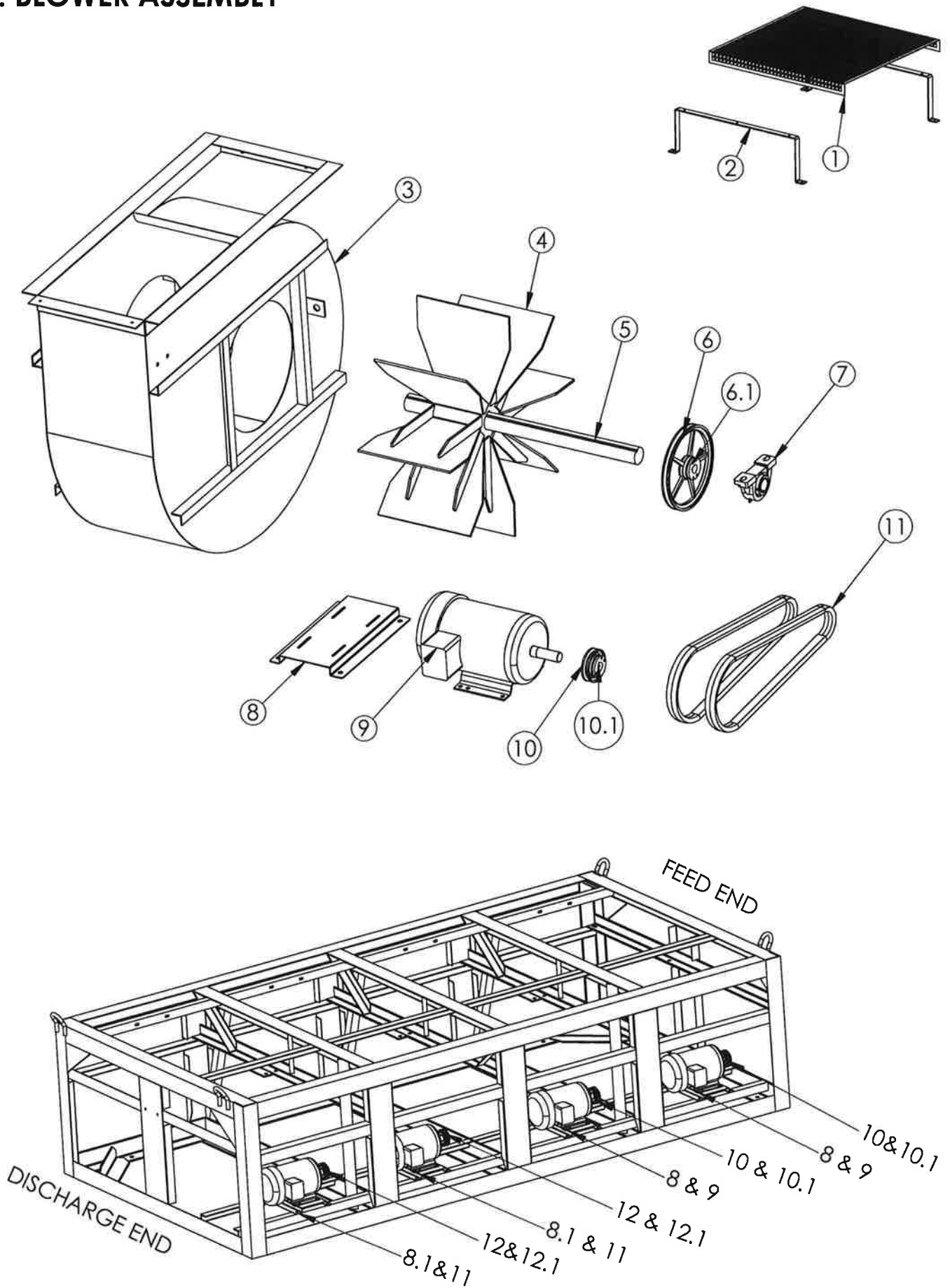
**DISCHARGE END
RIGHT HAND**

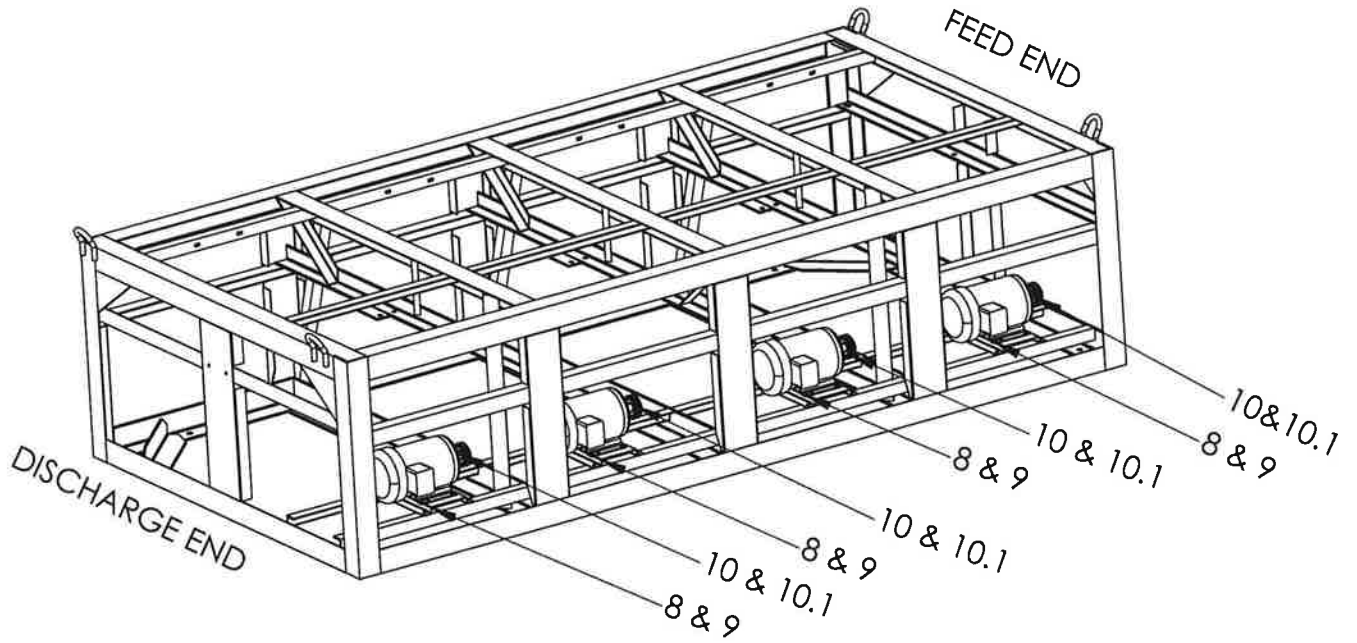
1. AIR FLUSH FILTER



REF NO	DESCRIPTION	PART ID	QTY
1	END FLUSH FILTER COMPLETE	QAF001	4
	SIDE FILTER COMPLETE	QAF002	8
2	ENDFLUSH FILTER FRONT PANEL	QAF003	4
	SIDE FILTER FRONT PANEL	QAF006	8
3	END FLUSH FILTER INSIDE FRAME	QAF004	4
	SIDE FILTER INSIDE FRAME	QAF005	8
4	SCREEN #30 STAINLESS 0.012	SSA226	6.22 SQFT
5	MAXI CAP FLUSH FILTER CLAMP	AAAA1011000	24
6	KNOB	ZFA350	24

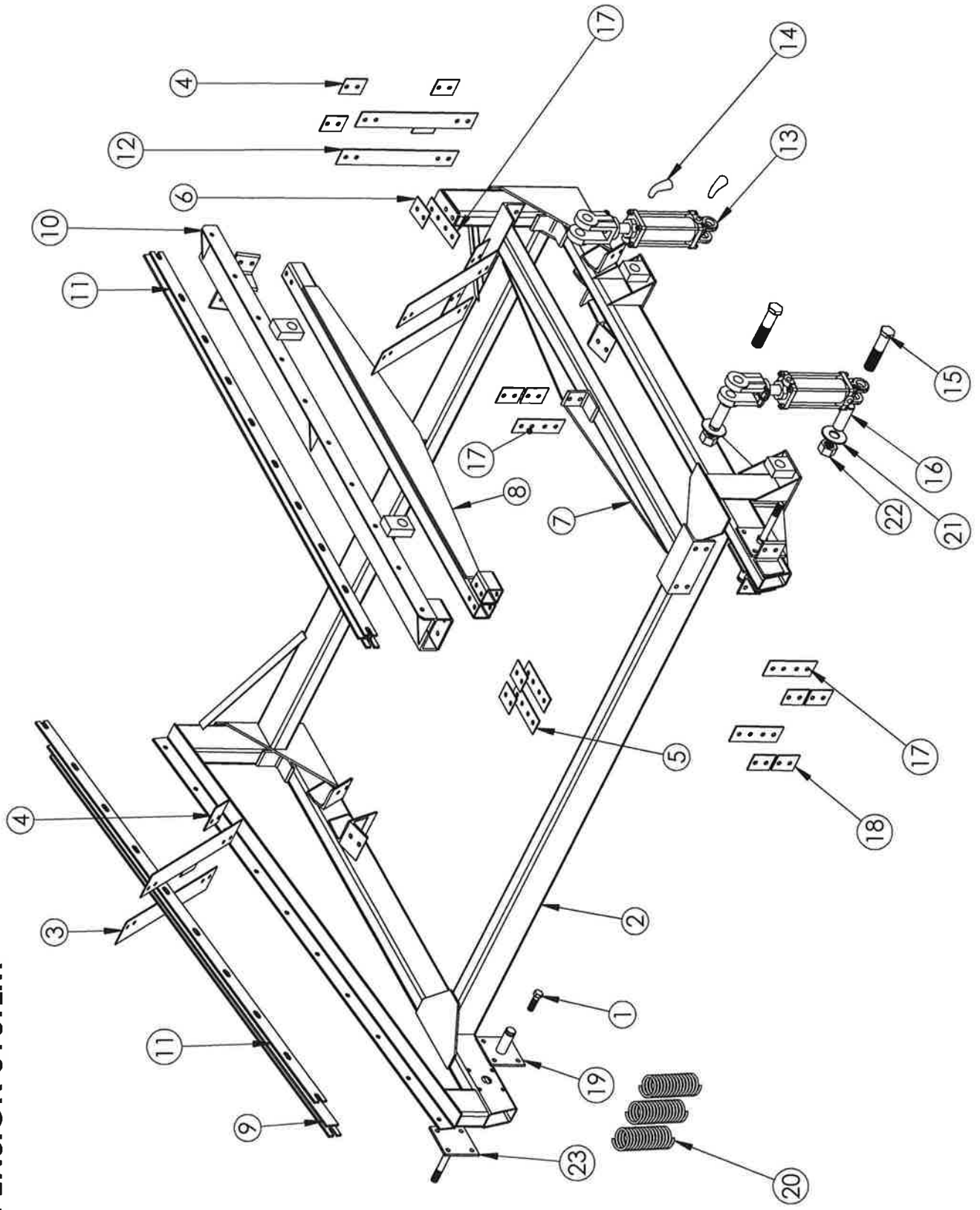
2. BLOWER ASSEMBLY





**2.A. ALMOND 3600 PLATINUM
MOTOR ASSEMBLY**

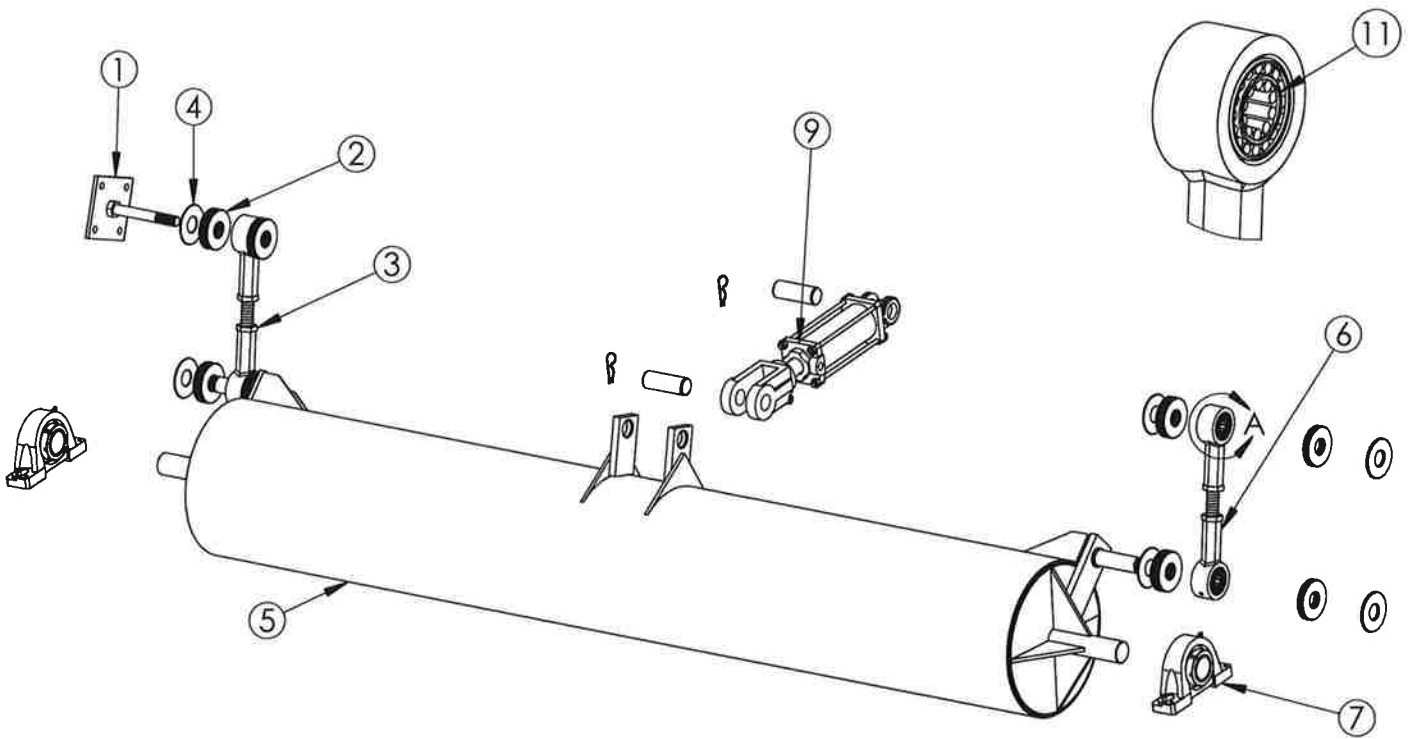
3.SUSPENSION SYSTEM



3. SUSPENSION SYSTEM

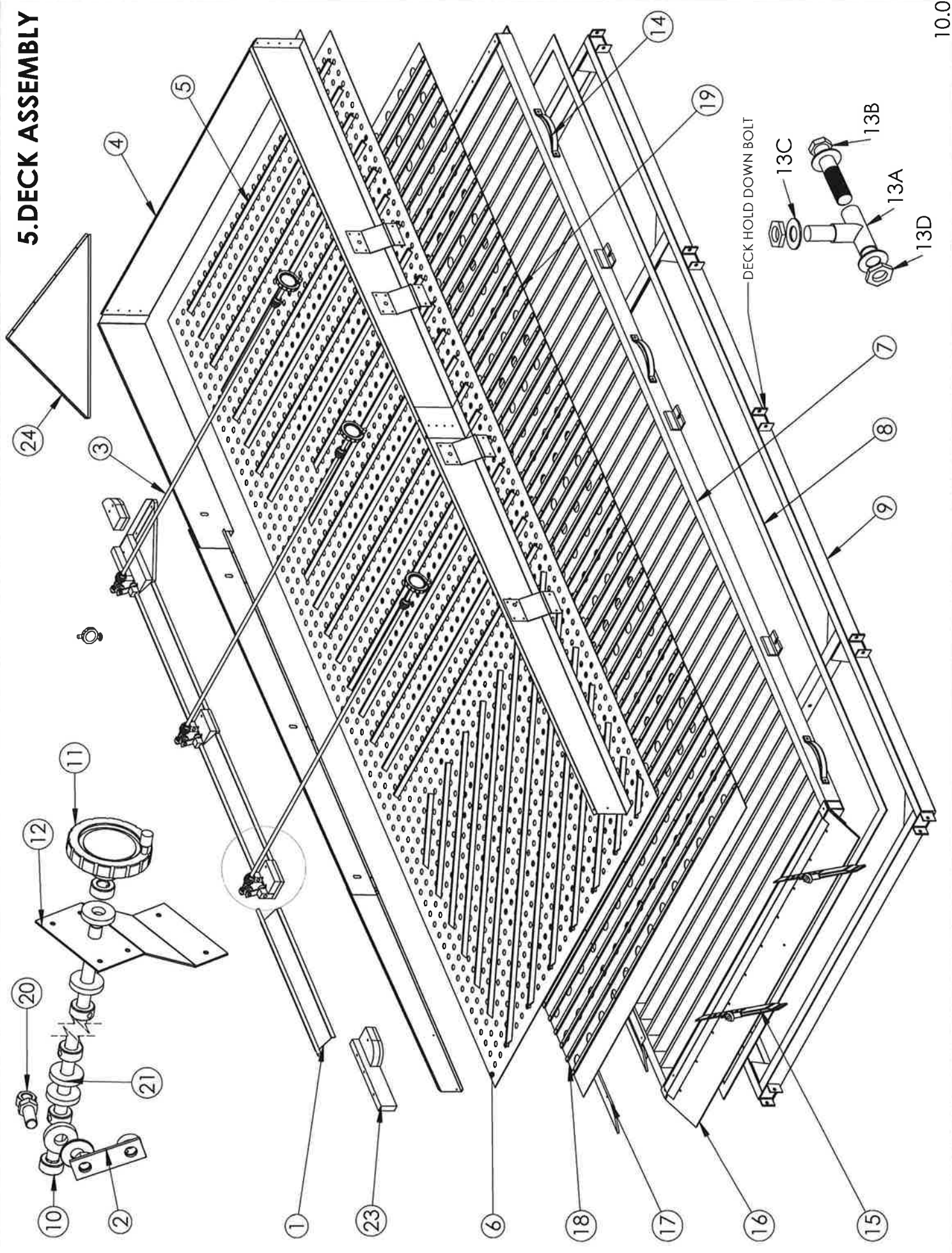
REF NO	DESCRIPTION	PART ID	QTY
1	5/8 X 4.5 HEX CAP SCREW	ZBT590	(16)
2	SPRING BOARD ASSEMBLY LH	QSB101	(1)
	SPRING BOARD ASSEMBLY RH	QSB102	(1)
3	SCOTCH PLY TOGGLE 2 X 16.5	ZFG110	(4)
4	SCOTCH PLY BACK PLATE 2 X 2.5	SSB101	(12)
5	SCOTCH PLY TOGGLE 1.75 X 5.5	ZFG135	(4)
6	SCOTCH PLY BACK PLATE 1.75 X 2.25	SSB102	(8)
7	SPRING BOARD STABILIZER LH	QSB211	(1)
	SPRING BOARD STABILIZER RH	QSB210	(1)
8	SPRING BOARD POWER TRANS.LINK LH	QSB221	(1)
	SPRING BOARD POWER TRANS.LINK RH	QSB220	(1)
9	SPRING BOARD MACHINE PLATE	RSB350	(2)
10	SPRING BOARD END RAISE LH	QSB302	(1)
	SPRING BOARD END RAISE RH	QSB251	(1)
11	HINGE PLATE BACKING STRIP	QSB351	(8)
12	SCOTCH PLY TOGGLE 2 X 13.5	ZFG120	(2)
13	HYDRAULIC CYLINDER 2 X 4	ZHY130	(2)
14	3/8" X 90 STREET ELBOW	ZHY281	(2)
15	5/8 X 4.5 HEX CAP SCREW	ZBT590	(12)
16	UHMW BUSHING	SHY342	(4)
17	SCOTCH PLY TOGGLE 2 X 5.5	ZFG130	(4)
18	SCOTCH PLY BACK PLTE 2 X 2.5	SSB102	(8)
19	SPRING BOARD TILT LINK MT	SSB105	(2)
20	EXTENSION SPRING 12 X 1.25	ZSB500	(6)
21	5/8 WASHER	ZWA940	(24)
22	5/8 JAM NUT	ZNT961	(12)
23	TILT SPRING MOUNT PLATE	SSB107	(2)

4.TILT CONTROL SYSTEM



REF NO	DESCRIPTION	PART ID	QTY
1	SPRING BOARD TILT MT	SSB105	(2)
2	TILT BEARING PLASTIC WASHER	SEC306	(16)
3	3/4" NUT	ZNT971	(12)
4	1" FLAT WASHER	ZWA950	(14)
5	TILT TUBE COMPLETE	QEC200	(1)
6	TILT LINK COMPLETE	SEC310	(1)
7	1-7/16" PILLOW BLOCK BEARING	ZBG210	(2)
8	3/8" 90 STREET ELBOW	ZHY281	(6)
9	HYDRAULIC CYLINDER - 2 X 6	ZHY140	(1)
10	ECCENTRIC BEARING BKT TILT/SPEED CY. MT (OLD PART NOT SHOWN)	SEC150	(1)
11	1" INNER BEARING W/RACE - MI- 16	ZBG250	(4)

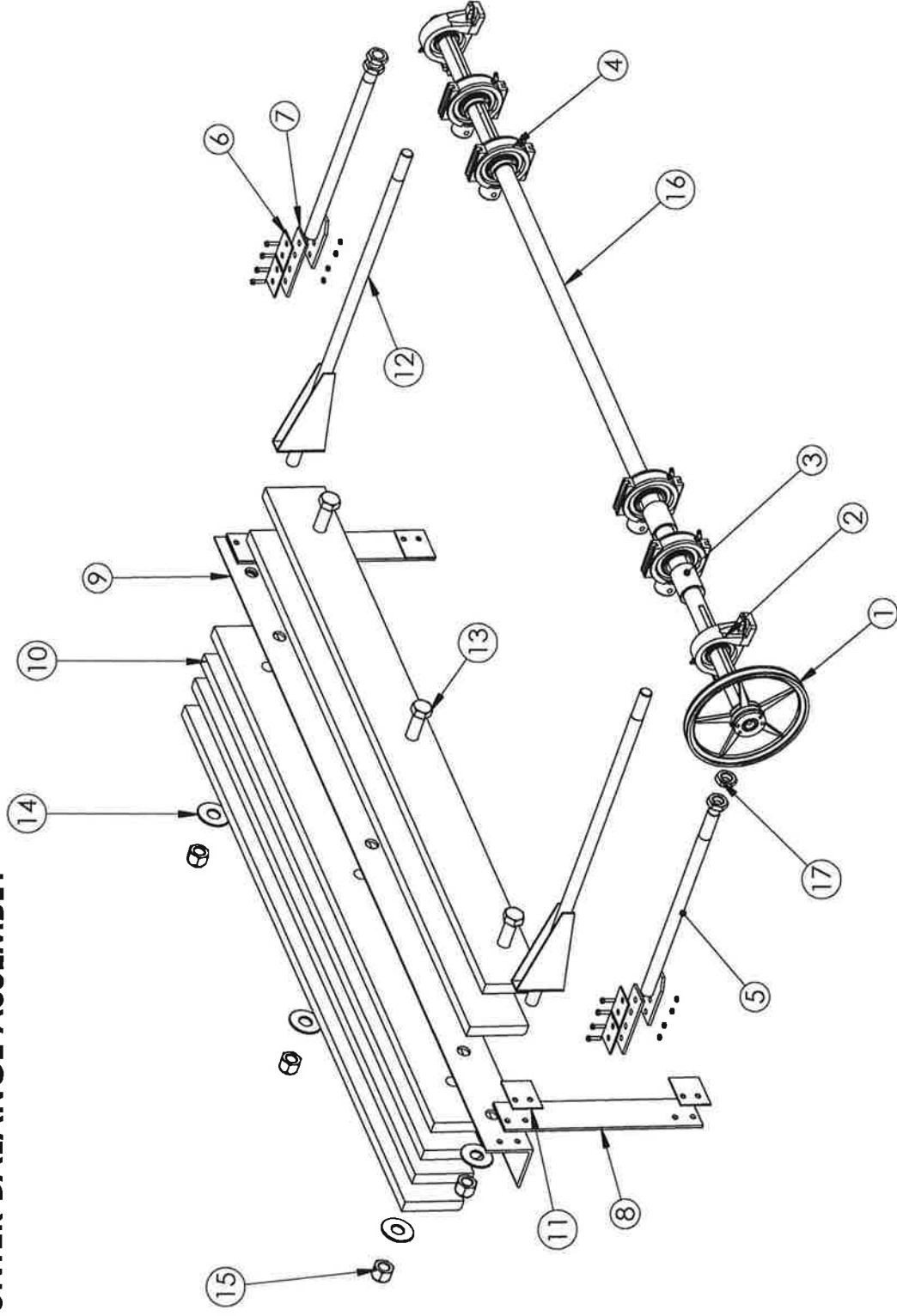
5. DECK ASSEMBLY



5.DECK ASSEMBLY

REF NO	DESCRIPTION	PART ID	QTY
1	DECK SIDE DISCHARGE GATE	SDK321	(1)
2	DECK CONTROL GATE LINKAGE	SDK328	(4)
3	DECK CONTROL GATE ROD	QDK332	(3)
4	DECK SIDE RAIL SET LH	QDK301	(1)
	DECK SIDE RAIL SET RH	QDK302	(1)
5	RIFFLE SET LH	QDK375	(1)
	RIFFLE SET RH	QDK376	(1)
6	DECK OVERCOVER		
	10 MESH DECK OVER COVER W/RIVETS	QDK233	(1)
	16 MESH DECK OVER COVER W/RIVETS	QDK235	(1)
	30 MESH DECK OVER COVER W/RIVETS	QDK237	(1)
7	DECK FRAME LH	QDK199	(1)
	DECK FRAME RH	QDK200	(1)
8	1/16" x 1.5" PSA NEOPRENE,PER FOOT	ZDK900	34 ft
9	DECK CARRIAGE RH	QDK500	(1)
	DECK CARRIAGE LH	QDK499	(1)
10	1/2 COLLAR	ZNT775	(20)
11	PLASTIC SPINNER KNOB	ZBF003	(3)
12	DECK CONTROL GATE ROD ANGLE LH	SDK333	(4)
	DECK CONTROL GATE ROD ANGLE RH	SDK334	(4)
13A	DECK HOLD DOWN BOLT	SDK522	(9)
13B	3/8" x 3 3/4" HEX CAP SCREW	ZBT432	(18)
13C	3/8" FLAT WASHER	ZWA930	(20)
13D	3/8" NYLON LOCK NUT	ZNT375	(16)
14	DECK HANDLE	ZDK001	(4)
15	COMPLETE CUTTING FINGER	HDK812	(3)
16	DECK END DISCHARGE APRON	QDK261	(1)
17	DECK SIDE DISCHARGE APRON	QDK260	(1)
18	UNDER COVER SET - A DECK	QDK220	(1)
	UNDER COVER SET - B DECK	QDK221	(1)
19	PARTING STRIPS SET	QDK245	(1)
20	ACME WELDED EYEBLOT	HVS504	(6)
21	1/2" RUBBER WASHER	ZDK917	(16)
22	ROCK TRAP GATE	SDK320	(1)
23	POLY DECK BLOCK SET - LH	QDK351	(1)
	POLY DECK BLOCK SET - RH	QDH350	(1)
24	3600 UNIVERSAL CUT OFF BOARD (LH & RHO	QDK400	(1)

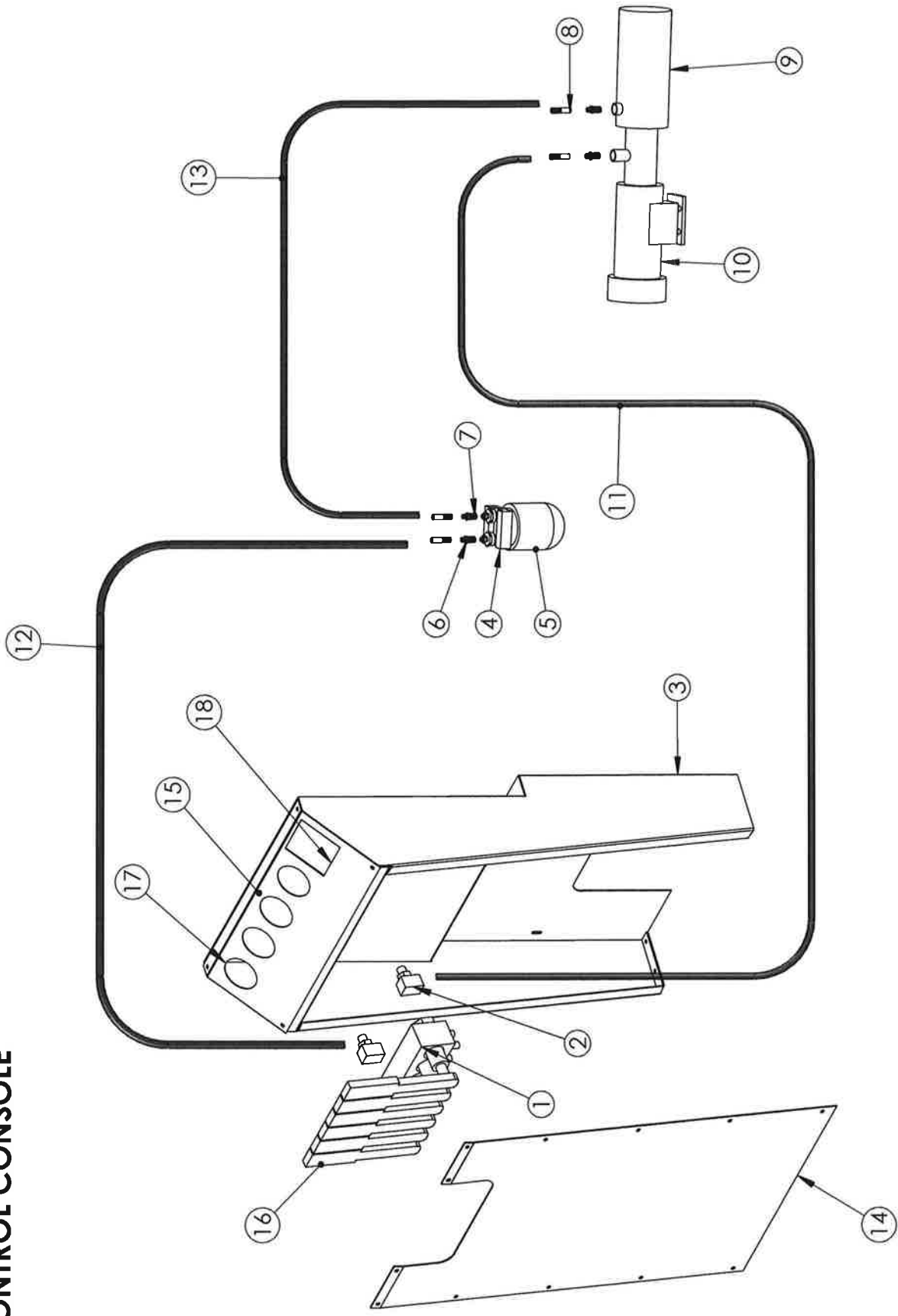
6. COUNTER BALANCE ASSEMBLY



6.COUNTER BALANCE ASSEMBLY

REF NO	DESCRIPTION	PART ID	QTY
1	BK100H SHEAVE	ZBK810	(1)
2	1 7/16" PILLOW BLOCK BEARING	ZBG211	(3)
3	ECCENTRIC HEART	SEC352	(4)
4	1 15/16" TAKE UP BEARING	ZBG230	(4)
5	ECCENTRIC DRIVE ROD COMPLETE	SEC340	(2)
6	SCOTCH PLY BACK PLATE 1 3/4" X 2 1/2"	SSB102	(4)
7	SCOTCH PLY TOGGLE 2" X 5 1/2"	ZFG130	(2)
8	SCOTCH PLY TOGGLE 3 x 16.5	ZFG100	(2)
9	COUNTER WEIGHT MOUNT ANGLE	QEC300	(1)
10	COUNTER WEIGHT PLATE	QEC301	(6)
11	BACKING PLATE 2 X 2 1/2"	SSB101	(4)
12	COUNTER BALANCE DRIVE ROD	QEC320	(2)
13	1" x 8" HEX CAP SCREW	ZBT615	(12)
14	1" FLAT WASHER	ZWA950	(12)
15	1" NYLON LOK NUT	ZNT510	(12)
16	ECCENTRIC SHAFT	QEC350	(1)
17	1" JAM NUT	ZNT900	(8)

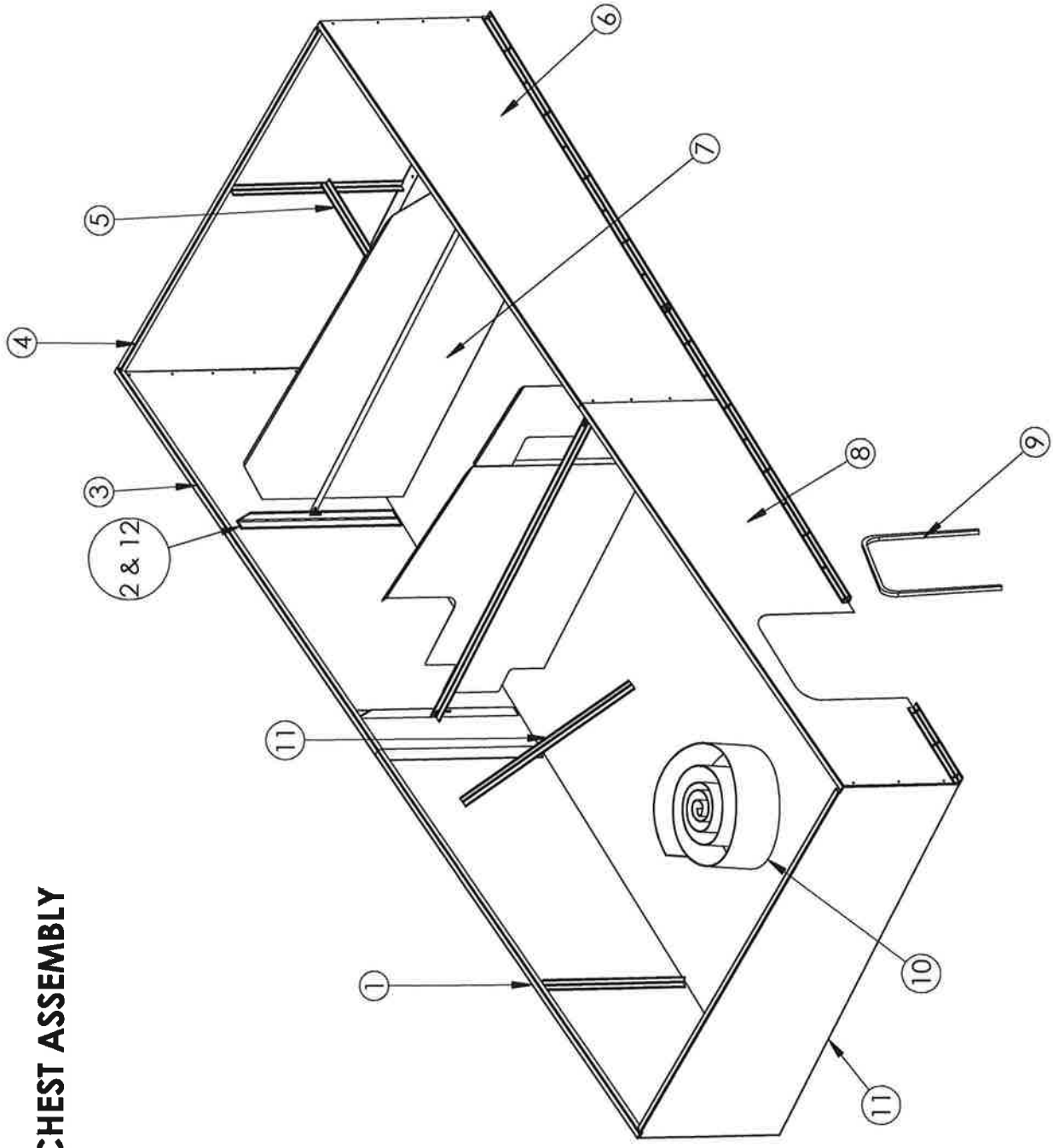
7. CONTROL CONSOLE



7.CONTROL CONSOLE

REF NO	DESCRIPTION	PART ID	QTY
1	HYDRAULIC 6-SECTION VALVE	ZHY110	(1)
2	HYD. ADAPTOR O6U R66	ZHY260	(2)
3	CONTROL CONSOLE COMPLETE	QHY002	(1)
4	HYDRAULIC FILTER, HEAD	ZHY150	(1)
5	HYDRAULIC FILTER REPLACEMENT CARTRIDGE	ZHY151	(1)
6	HYD. ADAPTOR 9205-4x6	ZHY240	(23)
7	HYD. ADAPTOR 9315 -6x6	ZHY250	(2)
8	HYD. ADAPTOR 9315 -6x4	ZHY230	(14)
9	HYDRAULIC PUMP ONLY	ZHY101	(1)
10	HYDRAULIC MOTOR ONLY	ZHY102	(1)
11	3/8" HOSE PUMP TO CONTROL VALVE 7'	SHY381	12 FT
12	3/8" HOSE CONTROL VALVE TO FILTER 2.5'	SHY382	8.8 FT
13	3/8" FILTER TO PUMP 4.5'	SHY383	3 FT
14	CONTROL CONSOLE FRONT PANEL	QHY202	(1)
15	CONSOLE TOP PANEL	QHY111	(1)
16	CONTROL VALVE HANDLE	ZHY117	(8)
17	AIR INDICATOR GAGE	ZVS230	(4)
18	A/C INVERTER SPEED CONTROL REMOTE	ZVS196	(1)

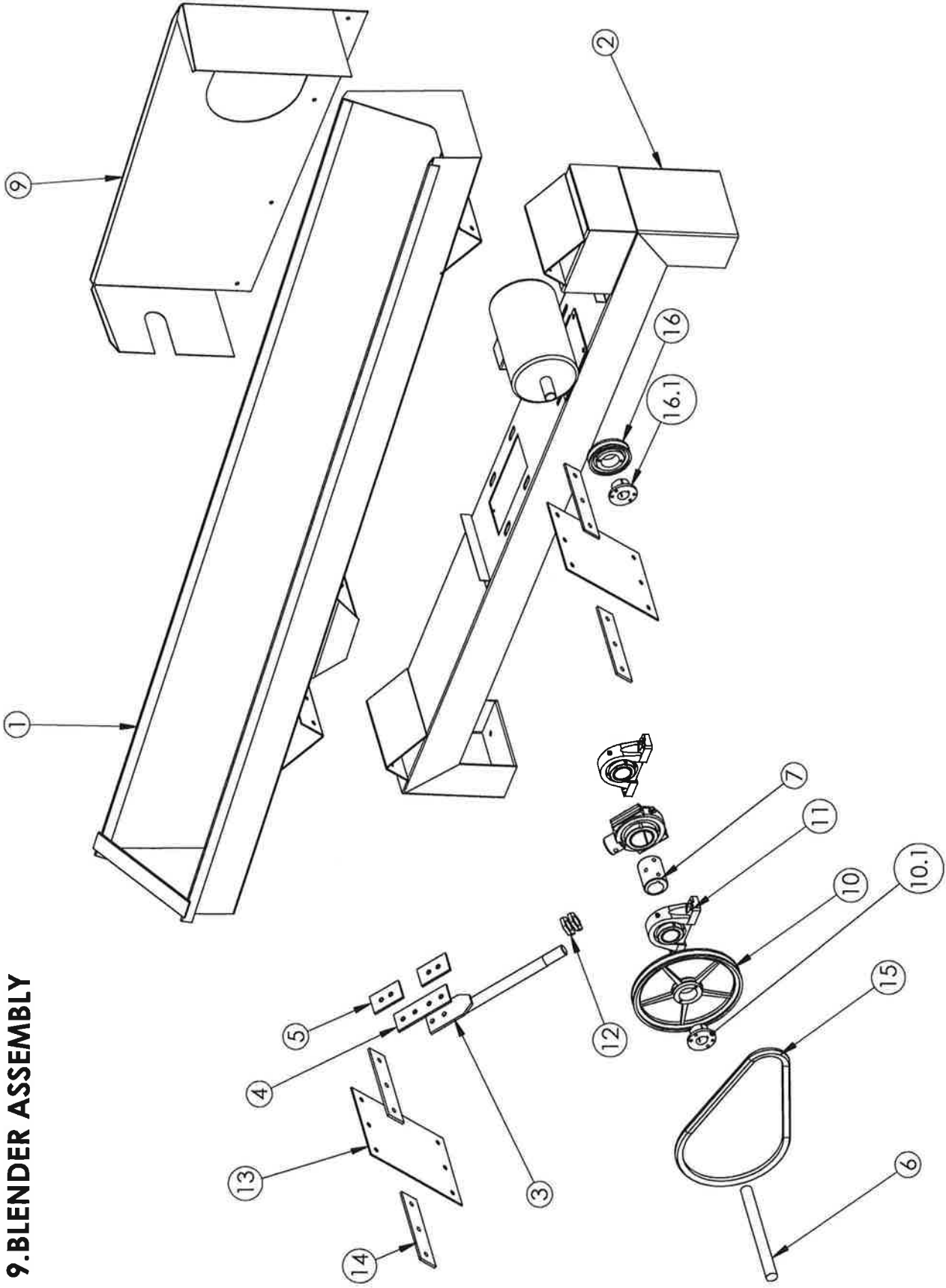
8. AIR CHEST ASSEMBLY



8.AIR CHEST ASSEMBLY

REF NO	DESCRIPTION	PART ID	QTY
1	AIRCHEST HIGH SIDE DIS.QTR PANEL RH	QAC130	(1)
	AIRCHEST HIGH SIDE DIS.QTR PANEL LH	QAC129	(1)
2	AIRCHEST ANGLE BRACE - HIGH SIDE	QAC181	
3	AIRCHEST HIGH SIDE FEED QTR PANEL RH	QAC140	(1)
	AIRCHEST HIGH SIDE FEED QTR PANEL LH	QAC139	(1)
4	AIRCHEST FEED END PANEL RH	QAC150	(1)
	AIRCHEST FEED END PANEL LH	QAC149	(1)
5	AIRCHEST BRACE - HIGH SIDE	QAC180	
6	AIRCHEST LOW SIDE FEED QTR PANEL RH	QAC110	(1)
	AIRCHEST LOW SIDE FEED QTR PANEL LH	QAC109	(1)
7	AIRCHEST DIVIDER SET,RH	QAC200	(1)
	AIRCHEST DIVIDER SET,LH	QAC199	(1)
8	AIRCHEST LOW SIDE DIS.QTR PANEL RH	QAC100	(1)
	AIRCHEST LOW SIDE DIS.QTR PANEL LH	QAC099	(1)
9	PLASTIC TRIM PER FOOT	ZHY330	1.5 FT
10	NRV BOOT	QAC300	(1)
	ADHESIVE BACKED VELCRO HOOK MATERIAL	VCROPS	(1)
11	AIRCHEST DISCHARGE END PANEL RH	QAC120	(1)
	AIRCHEST DISCHARGE END PANEL LH	QAC119	(1)
12	AIRCHEST BRACE, LOW SIDE	QAC182	(1)

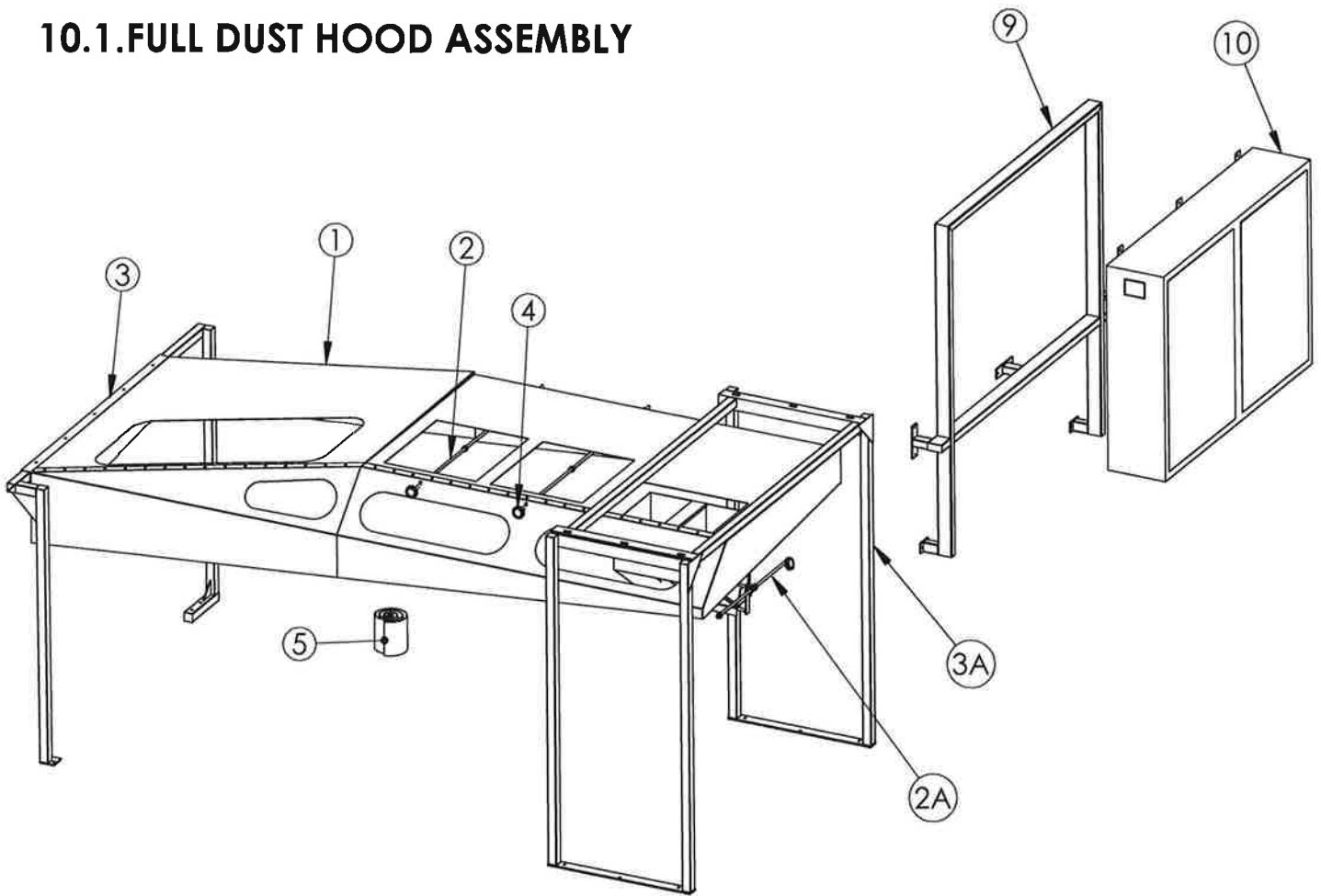
9. BLENDER ASSEMBLY



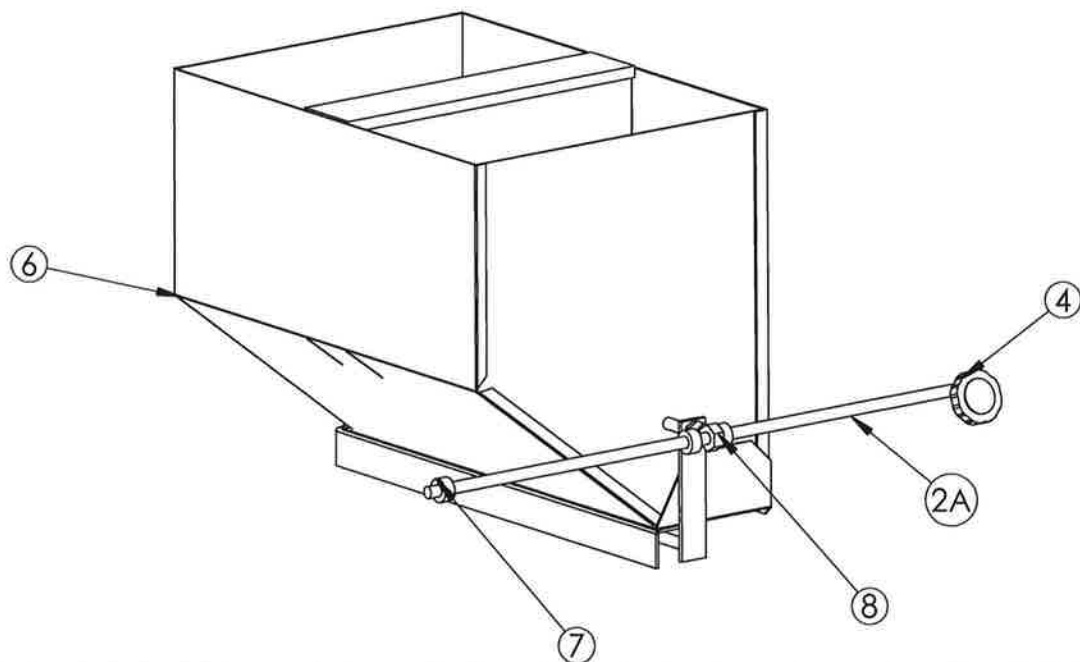
9. POWER BLENDER ASSEMBLY

REF NO	DESCRIPTION	PART ID	QTY
1	BLENDER TROUGH, RH	SBP100	(1)
	BLENDER TROUGH, LH	SBP099	(1)
2	BLENDER BASE LH OR RH	QBP200	(1)
3	M/C STONER DRIVE ROD	UEC340	(1)
4	PUSH ROD SCOTCHPLY TOGGLE	ZFG130	(1)
5	SCOTCHPLY BACKUP PLATES	SSB102	(2)
6	PB ECCENTRIC SHAFT 9" LONG	HBP040	(1)
7	ECCENTRIC HEART COMPLETE	SEC350	(1)
8	1 3/4" ECC PUSH ROD BEARING LOK	HEC201	(1)
9	BELT GUARD LH	SBP500	(1)
	BELT GUARD RH	SBP499	(1)
10	BK100 SHEAVE	ZBK810	(1)
10.1	H BUSHING 1 3/16	ZBK374	(1)
11	1-3/16" PILLOW BLOCK BEARING	ZBG118	(2)
12	JAM NUT	ZNT900	(2)
13	SCOTCHPLY TOGGLE 8 x 12	ZFG155	(2)
14	SCOTCHPLY BACKUPS	SBP601	(4)
15	B51 BELT	ZBK251	(1)
16	BK36H SHEAVE	ZBK805	(1)
16.1	H BUSHING 7/8"	ZBK370	(1)
17	H/C C/W BEARING BRACKET	HEC111	(1)

10.1. FULL DUST HOOD ASSEMBLY



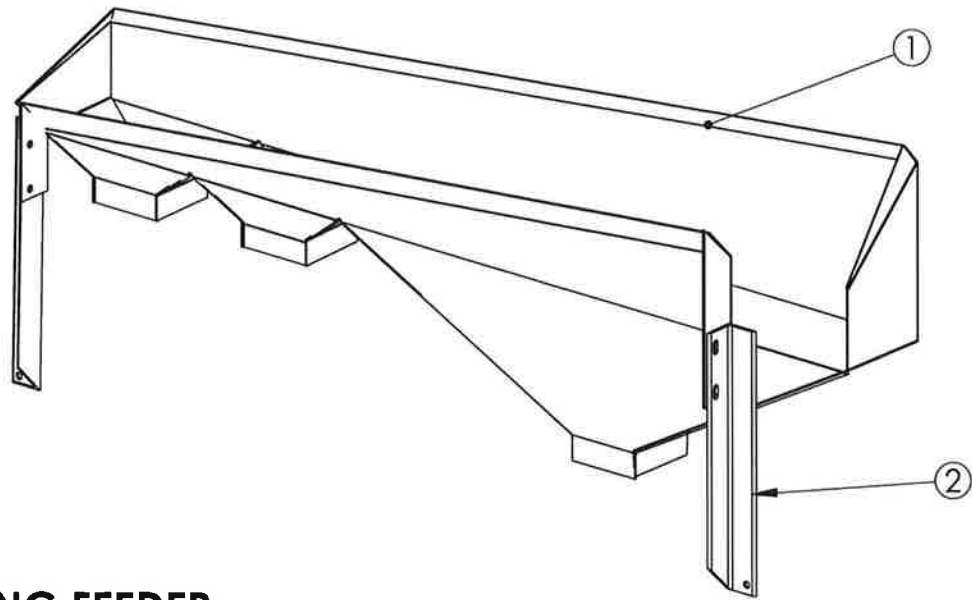
10.2. DUST HOOD FEEDER



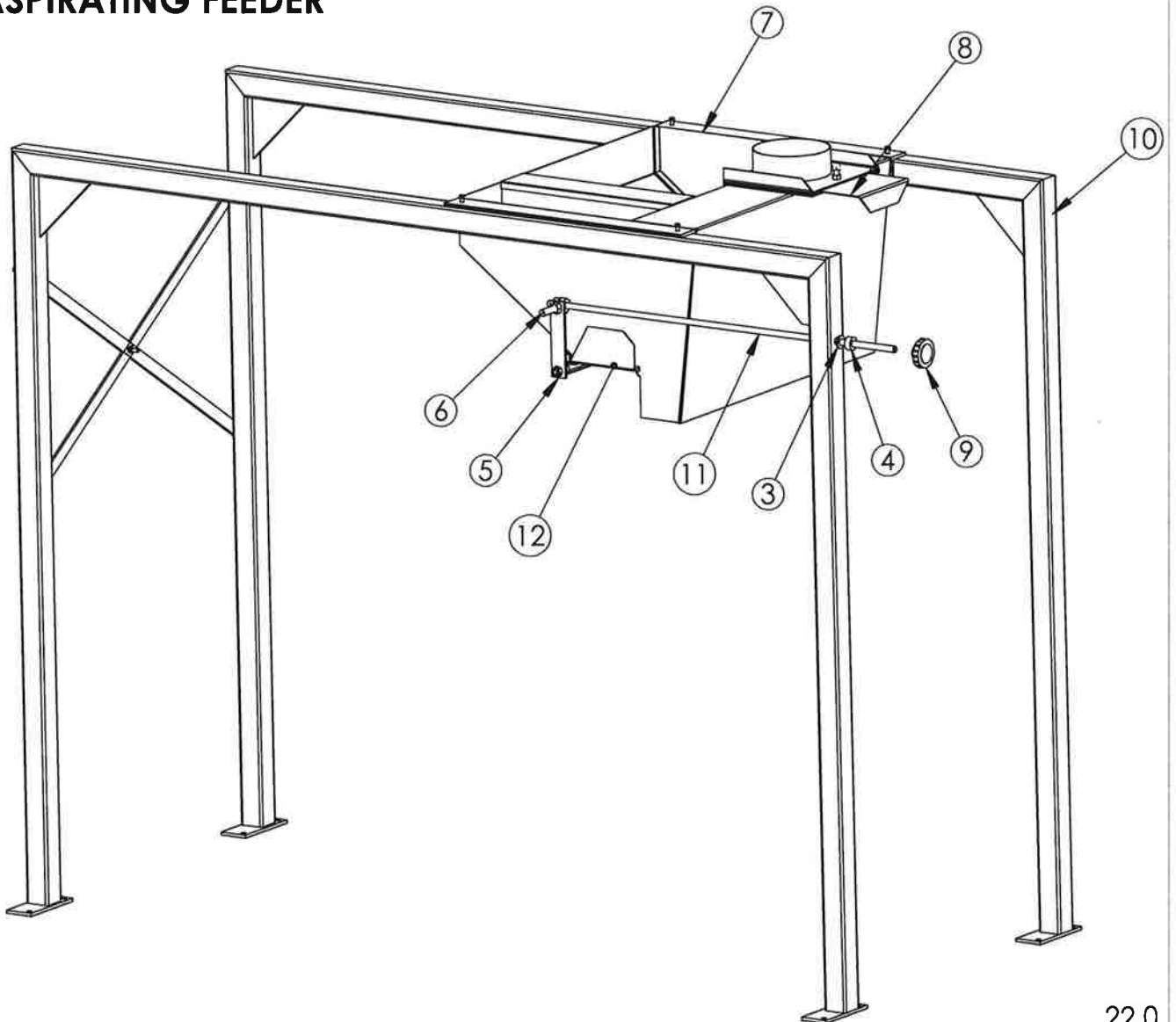
10.FULL DUST HOOD AND DUST HOOD FEEDER

REF NO	DESCRIPTION	PART ID	QTY
1	3600 LH DUST HOOD	QDH101	(1)
	3600 RH DUST HOOD	QDH102	(1)
2	3600 DUST HOOD AIR GATE ROD	QDH142	(2)
2A	240,316 SHORT AIR GATE ACME ROD	ABF311	(1)
3	3600 LH DH DISCHARGE END MT POST	QDH135	(1)
	3600 RH DH DISCHARGE END MT POST	QDH134	(2)
3A	3600 DUST HOOD MT POST	QDH136	(1)
4	PLASTIC KNOB WITH RECIPROCAL HANDLE	ZBF003	(3)
5	3600 LH NRV/DUAL LOCK DH BOOT	QDH321	(1)
	3600 RH NRV/DUAL LOCK DH BOOT	QDH320	(1)
6	3600 DUST HOOD FEEDER LH	SDH117	(1)
	3600 DUST HOOD FEEDER RH	SDH120	(1)
7	1/2" COLLAR	ZNT775	(8)
8	M/C DECK SQ.HEAD EYE BOLT 1"	SDK500	(1)

11.1.DISCHARGE HOPPER

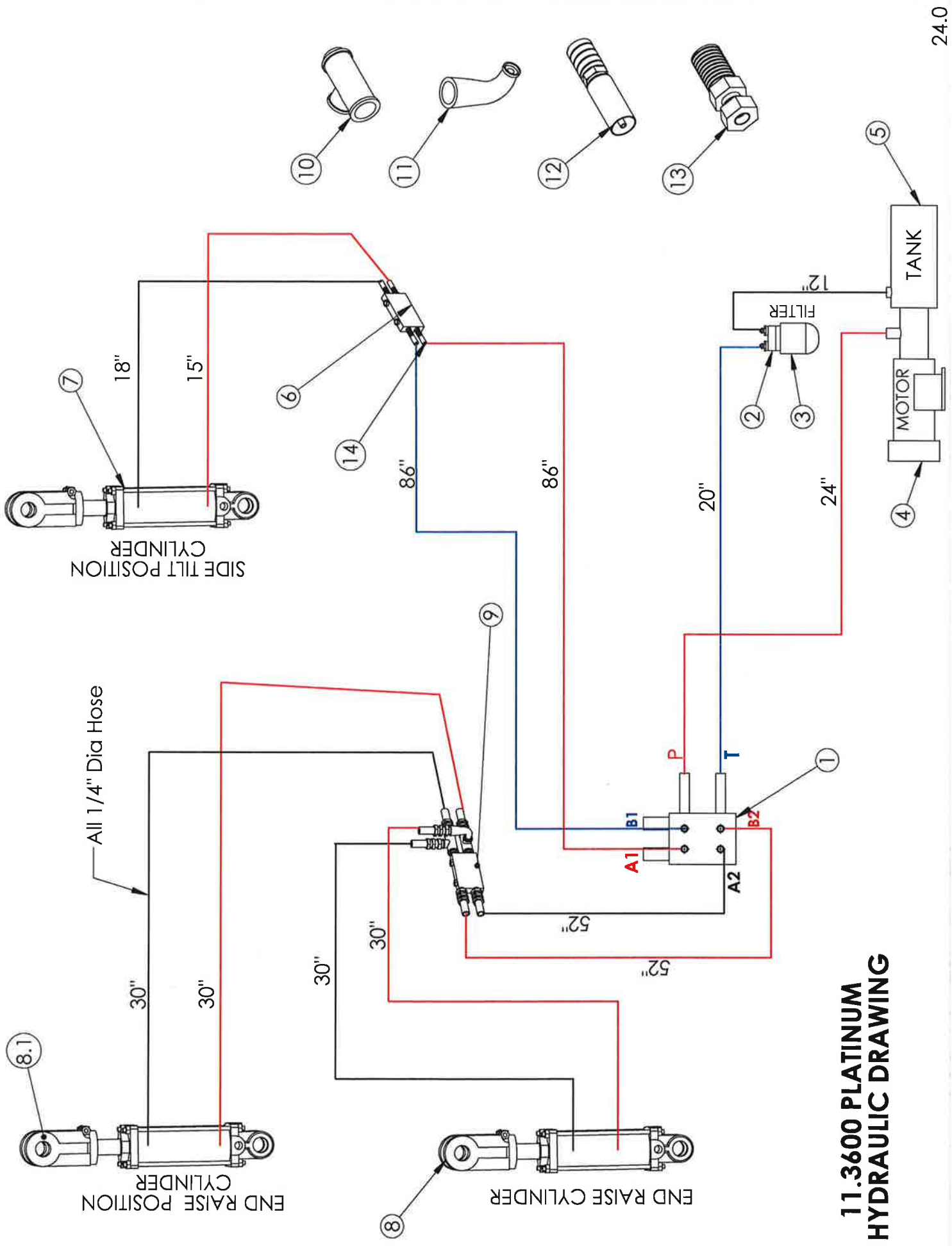


11.2.ASPIRATING FEEDER



11.DISCHARGE HOPPER AND ASPIRATOR FEEDER

REF NO	DESCRIPTION	PART ID	QTY
1	DISCHARGE HOPPER , LH	QCD001	(1)
	DISCHARGE HOPPER , RH	QCD002	(1)
2	DISCHARGE HOPPER MOUNT SET	SCD200	(1)
3	NYLON WASHER	W2P	(1)
4	½" COLLAR	ZNT775	(6)
5	ASPIRATING FEEDER FEED CONTROL LINK W/NUTS	SFA330	(1)
6	EYEBOLT	SDK500	(2)
7	ASPIRATOR FEEDER COMPLETE LH	SFA101	(1)
	ASPIRATOR FEEDER COMPLETE RH	SFA100	(1)
8	ASPIRATING FEEDER AIR CONTROL PLATE	SFA231	(1)
9	PLASTIC SPINNER KNOB	ZBF003	(2)
10	FEEDER POST SET RH	QFA100	(1)
	FEEDER POST SET LH	QFA099	(1)
11	ASPIRATED FEEDER FEED CONTROL ROD	SFA300	(1)
12	FEED TRAY LH	SFA219	(1)
	FEED TRAY RH	SFA220	(1)



**11.3600 PLATINUM
HYDRAULIC DRAWING**

11. HYDRAULIC ASSEMBLY

REF NO	DESCRIPTION	PART ID	QTY
1	ELECTRIC HYDRAULIC VALVE-12C1TS-E11H-3VALVE	ZHY121	(1)
2	HYDRAULIC FILTER HEAD	ZHY150	(1)
3	HYDRAULIC FILTER REPLACEMENT CARTRIDGE	ZHY151	(1)
4	HYDRAULIC MOTOR ONLY	ZHY102	(1)
5	HYDRAULIC PUMP ONLY	ZHY101	(1)
7	HYDRAULIC POSITION CYLINDER - 2 X 6	ZHY141	(1)
8	HYDRAULIC CYLINDER 2 X 4	ZHY130	(1)
8.1	HYDRAULIC POSITION CYLINDER 2 X 4	ZHY131	(1)
9	HYDRAULIC CHECK VALVE	ZHY120	(1)
10	HYDRAULIC FITTING 1/4" TEE	ZHY285	(2)
	HYDRAULIC FITTING 1/4" CLOSE NIPPLE	ZHY286	(2)
11	3/8" X 90 STREET ELBOW	ZHY281	(2)
12	ADAPTER 9205 - 4 X 4	ZHY260	(16)
	ADAPTER 9315 - 6 X 4	ZHY230	(24)
	ADAPTER 9205 - 4 X 6	ZHY240	(24)
	ADAPTER 9205 - 6 X 6	ZHY250	(2)
13	HYDRAULIC FITTING 04U-104	ZHY200	(40)
	HYDRAULIC FITTING 06U-106	ZHY210	(2)
	HYDRAULIC FITTING 06U-104	ZHY215	(2)
	HYDRAULIC FITTING 06U-R66	ZHY220	(2)
14	MAXI-CAP FLOW RESTRICTER	ZHY271	(2)