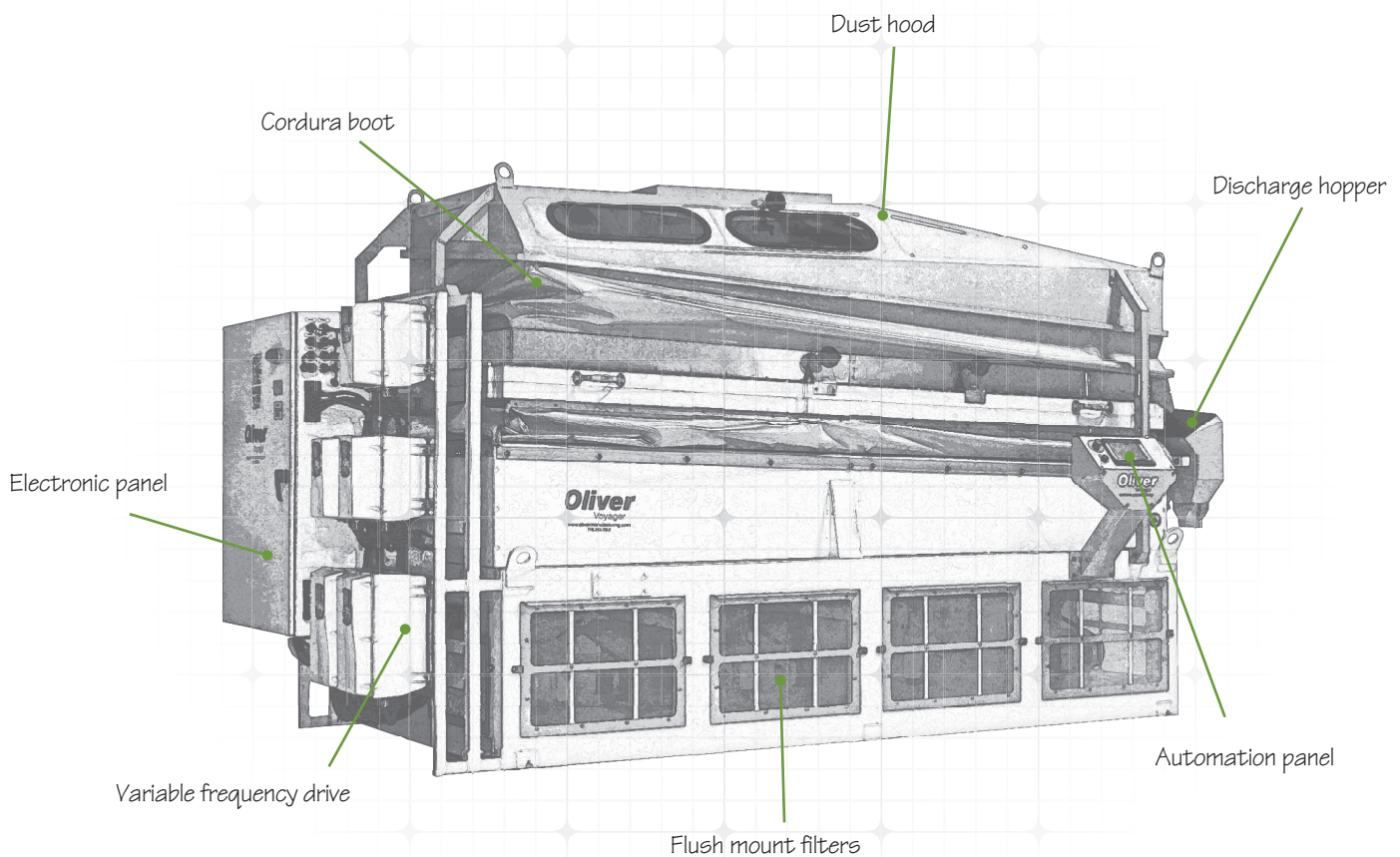


Factory Accessories & Upgrades

2022



Oliver™
Innovate. Build. Repeat.

Table of Contents

About	1
-------------	---

Electronic Components

▶ Electrical Panels & Junction Boxes	2
▶ Fan Variable Frequency Drive	2
▶ Eccentric Motion Variable Frequency Drive	2

Instrumentation

▶ Electronic Tachnometer	3
▶ Angle Indicator	3
▶ Automation Refit	3

Adjustment Features

▶ Worm Jack Screw	4
▶ Ratcheting & Clamping Handle	4
▶ Modular Decks	4
▶ Aluminum Deck Carriage	5
▶ Coated Overcover	5
▶ Corner Cutoff Plate	5
▶ Horizontal Release Gate	6
▶ Adjustable (Heavy Side) End Gates	6

Feeders

▶ Accuflow Feed Gate	7
▶ Vibratory Product Feeder	7
▶ Aspirating Feeder	7

Discharge Options

▶ Power Blender	8
▶ Rock Trap / Discharge Gates	8
▶ Discharge Hoppers	8
▶ Scalp Screen	8

Under Carriage Upgrades

▶ Cordura Boots	9
▶ Air Chest Dividers	9
▶ Counter Balance	10
▶ Flush Mount Filters	10

Dust Control

▶ Partial Dust Hood	11
▶ Full Dust Hood	11

Size Right

▶ One-Piece Rigid Doors	12
▶ Roller Cleanout System	12

Screen Cylinders

▶ Slotted Conical	13
▶ Round Conical	13
▶ Slotted Ribbed	13
▶ Round Ribbed	13



Factory Accessories & Upgrades

Oliver replacement parts and upgrades feature the same superior design and quality as the machines. Our engineers are constantly at working to improve performance and longevity wherever possible. When machines last as long as ours, quality parts replacements, accessories, and upgrades can represent significant long-term convenience, safety, and productivity advantages.

Machine Key:

■ Hi-Cap Gravity ■ Maxi-Cap Gravity ■ Hi-Cap Destoner ■ Maxi-Cap Destoner ■ Voyager ■ Platinum ■ Dryer ■ Size Right

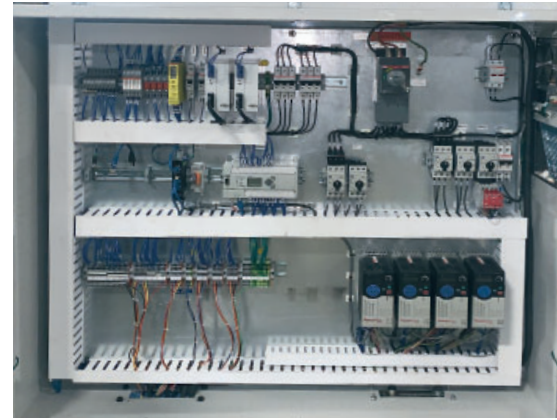


Electronic Components

Electronic Panels & Junction Boxes

Compatibility: 

Suited for all standard machines, these concentrate all electrical components, including the breakers, motor starters, VFD's, fuses, and PLC's. Having reliable and functioning Electronic Panel or Junction Box will enhance your overall machine functionality. Available in a wide variety of voltages to meet any needs worldwide. Significantly saves on time and expense. The electrical panels and junction boxes that enable the electrical system boasts a one-year warranty.



Fan Variable Frequency Drive

Compatibility: 

Fan Variable Frequency Drive (VFD'S) contribute to your machines air adjustability. This incremental control of the motor can add an infinite degree of fine tuning to your separation. Our machines have anywhere from 1-7 fans. We provide an option for your fan to be independently controlled, while still permitting independent fan zone control through manual adjustments giving you the ability to receive quality output. Slowing one fan while speeding up another fan.

- ▶ Maintain accurate fluidization
- ▶ Maximize energy consumption
- ▶ Operating ambient temperature -10 °C to 40°C (0° to 104°F)
- ▶ NEMA 12 Rating available



Eccentric Motion Variable Frequency Drive

Compatibility: 

Eccentric Variable Frequency Drive (VFD's) is an exceptional tool for monitoring and adjusting deck speeds.

- ▶ Material shift control
- ▶ Incremental RPM finite motion tune tuning
- ▶ Operating ambient temperature -10 °C to 40°C (0° to 104°F)
- ▶ NEMA 12 rating available



Electronic Tachnometer

Compatibility: ■■■■

Each digital Tachometer maximizes the operability for users with a simple readout of eccentric speed. If not properly maintained the tachometer may need replacement.



Angle Indicator

Compatibility: ■■■■

The Angle Indicator Scale corrects the operators' adjustments for deck side tilt and end raise. Conveniently located on the feed end. Easy installation.

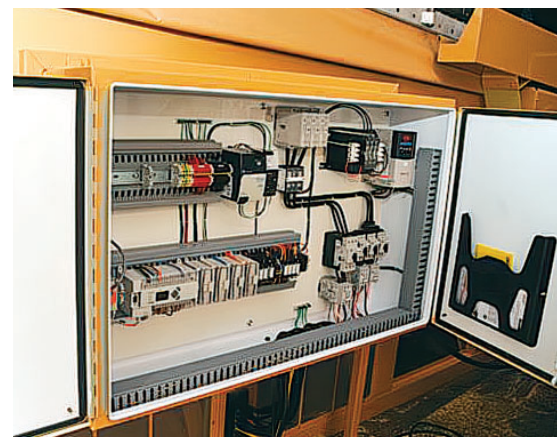


Automation Refit

Compatibility: ■

Convert your manually-controlled Maxi-Cap Gravity to include automation features. This upgraded kit adds programmed features for all aspects of gravity table adjustment, operation, and cleanout. The integration of programmable logic circuitry (PLCs) and electronic / hydraulic control adds both precision and repeatability over all input parameters: air control, table tilt, eccentric vibration, and feed rate. You'll be able to experience a whole new level of operation. Say goodbye to trying to remember your machine settings. You can now save your settings as a recipe. Save up to 20 recipes on your gravity table.

► 1-year warranty



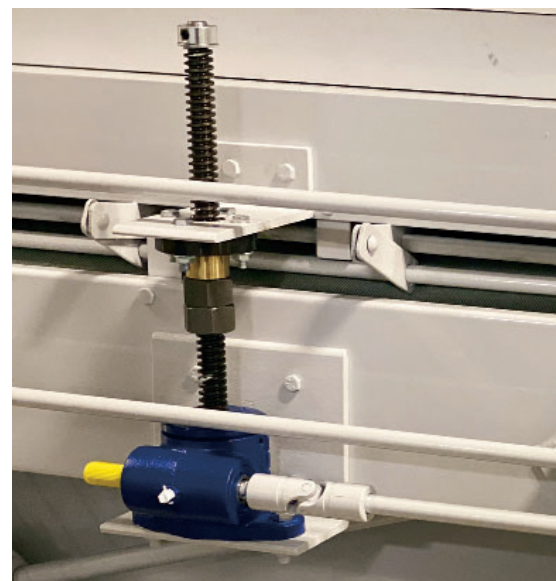
Adjustment Features

Worm Jack Screw

Compatibility: ■

Oliver's Jack screw provides a simple way to modify your deck's end raise. The ease of adjustments allows for smoother transitions and more time spent in production. . Get a better system for end raise from the feed end to the discharge end of your Hi-Cap Gravity with the improved end raise Worm Jack Screw. Now with just a twist of a handle you will have the ability to maximize your capacity.

- ▶ Produce higher quality of seed
- ▶ Increase the end raise, equals increasing flow rate
- ▶ Gain consistency in depth of material



Ratcheting & Clamping Handle

Compatibility: ■ ■ ■ ■ ■ ■ ■ ■

Every operator's companion, the ratcheting clamping handle. The handle has a durable elongated hand grip delivering additional leverage for side tilt and end raise adjustments.

- ▶ Ensure proper tension on the latch to prevent breakage and down time
- ▶ Recommend an angle of 90 degrees before pushing down to latch



Modular Deck

Compatibility: ■

The Modular Deck is an ideal candidate for replacing single-built decks. Maxi 4-5 panels. Voyager 1-2 panel. This 3–5-panel design is convenient for installation in tight spaces, switch out, cleaning, repair, and storage.

- ▶ Single operator installation
- ▶ Ease of shipping
- ▶ More cost effective
- ▶ Switch out panels when your switching product
- ▶ Comes with new boot (see page 9)

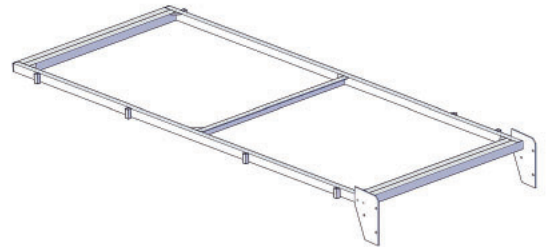


Aluminum Deck Carriage

Compatibility: ■ ■ ■ ■ ■ ■

Reinforcing the carriage and deck for maximum rigidity. This tubular aluminum construction provides enhanced corrosion resistance, better longevity, and improved wash-down capability. Comes with square tubing deck fastener. Implementation of this fastener to your deck lowers the risk of structural fatigue. The aluminum tubing construction is installed with standard half-inch bolts.

- ▶ Non-compatible with wood decks



Coated Overcover

Compatibility: ■ ■ ■ ■ ■ ■

Our unique spray on lining directly adheres to the wire mesh overcover, therefore increases durability, extends wear life, and improves product contact grip. The result is longer lasting wire mesh with enhanced separation efficiency. Approved for both agricultural commodities and industrial materials.

- ▶ Increased durability
- ▶ Improved grip on product

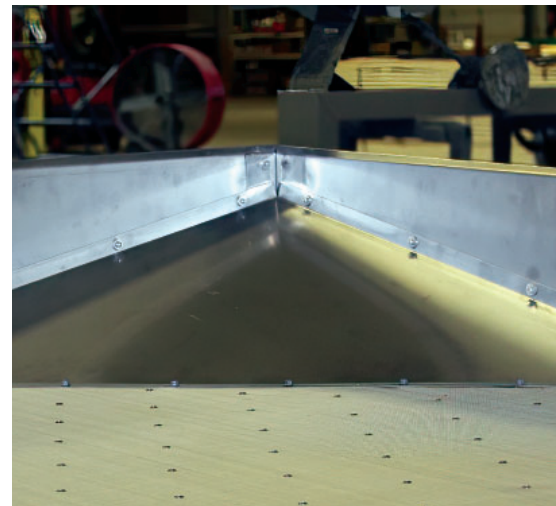


Corner Cutoff Plate

Compatibility: ■ ■ ■ ■ ■

The triangular stainless-steel Corner Cutoff Plate is positioned on the deck feed end, high side corner. Installation of this plate improves product distribution, and better manages airflow for separation.

- ▶ Easily retrofittable to older models



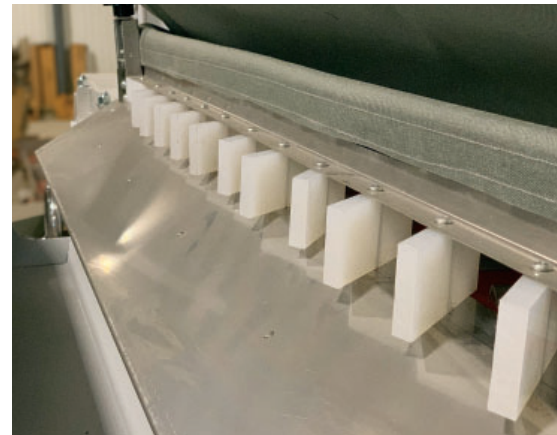
Adjustment Features

Horizontal Release Gate

Compatibility: 

Built into the deck rails is the Horizontal Release Gate. Designed specifically for releasing material from the heaviest layer of your product. The Horizontal Gates are ideal for separation of larger capacities as it can better control the material flow.

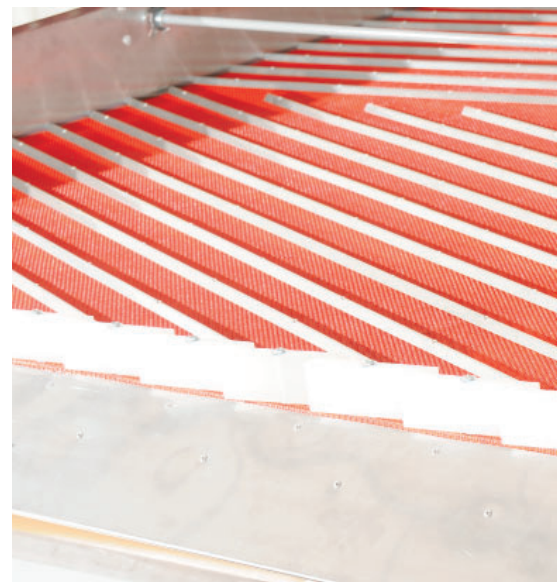
For best results controlling the discharge of heavy particles from the separation deck, Horizontal Release Gate accomplish effective balance and improve operator precision. For fastest adjustment when variable capacities and separation decisions occur throughout the processing day.



Adjustable (Heavy Side) End Gates

Compatibility: 

Located on the heavy fraction of the discharge end of the deck. Under certain operating conditions it is beneficial to utilize these gates in order to manipulate the separation in the means according to your product(s) standard. For example: pushing more product to your middle fraction in order to sift out unwanted product on your heavy side.



Accu-flo Feed Gate

Compatibility: ■ ■ ■ ■ ■ ■

This electronically controlled pneumatic actuator can be infinitely adjusted for uniform feed rate. It has a screw adjustment for flow control and pressurized air line for positive shut off (pictured is a combined Accu-flo and Aspiring Feeder configuration).

- ▶ Helps prevent material pile up on the deck after machine shutdown



Vibratory Product Feeder

Compatibility: ■ ■ ■ ■ ■ ■

Vibratory feeders assure consistent product flow on materials that tend to bridge at the intake. They can be installed with or without a Dust Hood to assist in uniform product flow, which is critical to separation efficiency. The vibratory feeder can be controlled through a manual adjustment or integrated controller via the touchscreen on Maxi-Cap Platinum and Voyager Gravity Separators.

- ▶ Introduces uniform product flow
- ▶ Consistent deck loading ensures reliable separation



Aspirating Feeder

Compatibility: ■ ■ ■ ■ ■ ■

Aspirating feeders provide an economical means of removing light contaminants before the particles are delivered onto the separation deck. These feeders are generally capable of handling moderate dust problems. If you do not already have an adequate in-house air system, a system can be ordered complete with fans, drives and bag filter system.

- ▶ 6" diameter air outlet
- ▶ 1000-1200 CFM exhaust air



Discharge Options

Power Blender

Compatibility: ■■■■■■

The motorized Power Blender rapidly conveys the heaviest product to the discharge hopper—improving capacity and eliminating the wear and strain associated with earlier rod-driven blenders. The blender significantly extends operating life and promotes smooth, trouble-free operation.

- ▶ Includes a 1 HP motor
- ▶ Increases operators' safety



Rock Trap Discharge Gate

Compatibility: ■■■■■■

Heavy contaminants side discharge gate allows precise metering of heavy discharge and easy periodic flush (discharge) of heavy material accumulating in rock traps or the high side of the machine. The spring-loaded design operates with an adjustable wheel for raising the gate to allow discharge. Alternately, the wheel can be left closed, and the slide can manually lift against the spring. Infinitely adjustable for particle size. Available for all Hi-Cap Destoners and Gravity Separators



Discharge Hopper

Compatibility: ■■■■■■

All hoppers are customizable to your separation solutions. We offer square or round discharge outlets, sized 4" and 6". Spouting is easily attached to round outlets on your Oliver machine.

- ▶ Optional add on Tuff-Flo urethane lining



Scalp Screen

Compatibility: ■

The scalp screen is an optional scalper specifically designed to eliminate clumping to applied seed treatments. Under variable treatment rates and different applications liquids may cause clumping or sticking. Some materials are more prone to this cohesive bonding which may make the flowability of particles more difficult. The scalp screen has the ability to completely rid of clumping and sticking.



Cordura Boots

Compatibility: ■■■■■■

Cordura is a synthetic material that is built to last. It has high tensile strength fibers and will withstand long term wear. It's also extremely water repellent. You will find the boot in two locations. First if applicable, you'll see it attached to the dust hood and deck rails. Second it will be attached to the under carriage and air chest. A dual locking, re-closable fastener is what holds it to the machine. Making it simpler for operators to open and reseal.

- Common names for a boot: skirts, canvas, fabric, and curtain

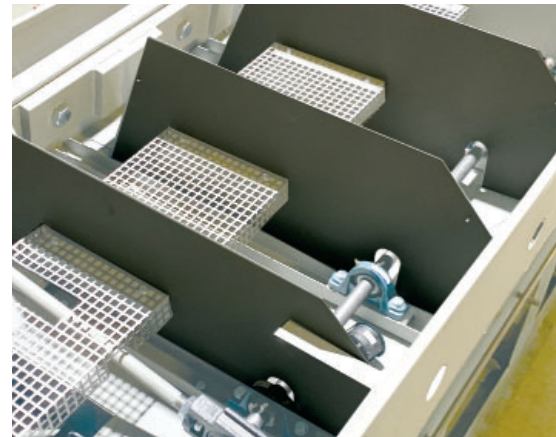


Air Chest Dividers

Compatibility: ■■■■

These vertical air dividers enable more accurate air control over the adjustment of individual fans driving weighing air through the deck.

- An upgrade for machines built prior to 1991



Undercarriage Upgrades

Counterbalance

Compatibility: ■ ■ ■ ■ ■ ■

An assembly of counter-rotating mass timed to reduce vibration transmitted by Gravity Separators or Destoners significantly. In addition, it will increase the operational life of high-wear machine parts such as bearings, shafts, etc. Oliver recommends installing machines on or above grade floors or other locations where an adequate foundation is unavailable. Installation may require additional equipment if installed with Air Chest Divider option. Standard on all Maxi-Cap Gravity Separators and Destoners, Voyagers, and all Hi-Cap Master Series machines.



Flush Mount Filters

Compatibility: ■ ■ ■ ■ ■ ■

Cleaner, more compact, non-protruding filters fit older machines with minor attachment modification. Flatter design installs into existing cutout to reduce the damage that can't airflow and compromise performance, leak impurities or create dead airflow spots. A heavier, better-built unit with stainless steel screen replacing brass. Bolt hold-downs replace hand screws to meet safety guidelines to cover motors and belt drives. It comes standard on all new Oliver machines. Retrofittable on all older machines.

- An upgrade for machines built prior to 2011



Dust hoods enclose the entire separation deck and remove all liberated dust from the product flow. Both partial and complete dust hoods must be connected to an in-house dust control system. Since a balance must be achieved between the hood exhaust air and the airflow required for separation, we include built-in exhaust air adjustment controls for precise balance of the incoming and exhaust air volume. See Page 7 for Aspirating feeder.

Partial Dust Hood

Compatibility: ■■■■■■

Dependent on your required work environment a partial dust hood can do away with unwanted debris in the air



Full Dust Hood

Compatibility: ■■■■■■

Rid of 100 percent of your air contaminant with a full dust hood. Recommended for a desired clean air environment

- ▶ The N-Series is application specific and only compatible with Hi-Cap Destoners olivermanufacturing.com/all-products/destoner-hi-cap-4/.



LED light

Compatibility: ■■■■■■

Purchase LED lighting to place on inside of hood. Internal illumination simplifies visual inspection.

- ▶ IP 66 rating—dust- and water-tight
- ▶ Requires 24-volt DC supply



■ Hi-Cap Gravity ■ Maxi-Cap Gravity ■ Hi-Cap Destoner ■ Maxi-Cap Destoner ■ Voyager ■ Platinum ■ Dryer ■ Size Right

Size Right Accessories

The Oliver Size right is unique to 4 designs which are created with efficiency and safety for a variety of products. Modular design for stacking purposes, allow you to have up to three cylinders in one. Wiper blades inset for an easy cylinder change. Timing belt drive with single gear motor and soft start frequency inverter for less stress on components.

One-Piece Rigid Doors

Compatibility: ■

The Size Rights one-piece door lifts off easily with the use of leveraging handles. Locked with a special locking key for safety.

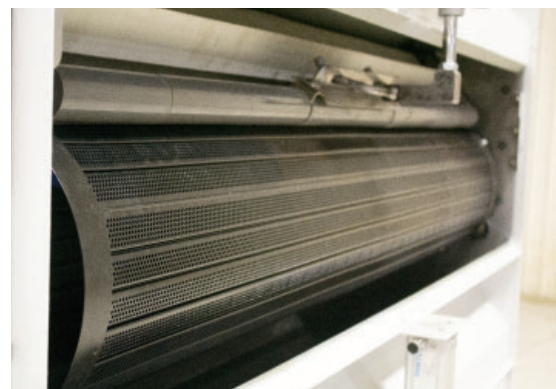


Roller Cleanout System

Compatibility: ■

Dislodge product or unwanted material with the roller system. Available for both manual and pneumatic timed automatic usage.

- Can be fitted to any Size Right.

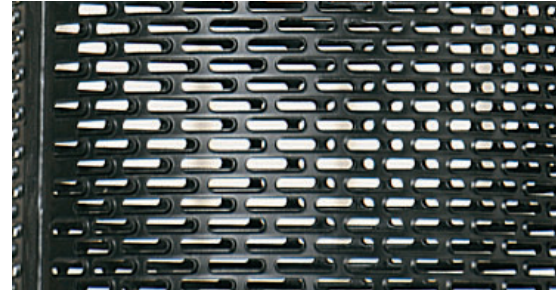


Our high-performance cylinders provide an accurate slot pitch and extremely high tolerances. Quick changing capabilities, have your cylinder swapped out in under two minutes. Sizing options available to custom order. Square and triangular ribbed cylinders made to order.

Slotted Conical Cylinder

Compatibility: ■

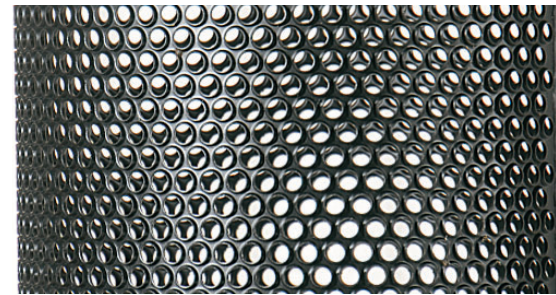
- ▶ Corn and legumes



Round Conical Cylinder

Compatibility: ■

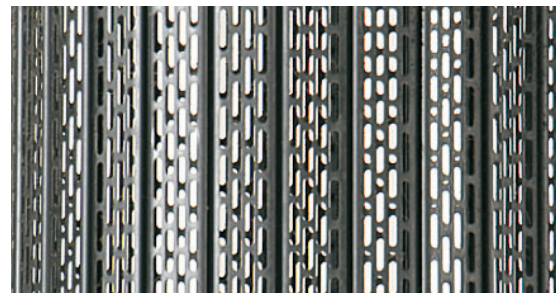
- ▶ Corn, peanuts, and chickpeas



Slotted Ribbed Cylinder

Compatibility: ■

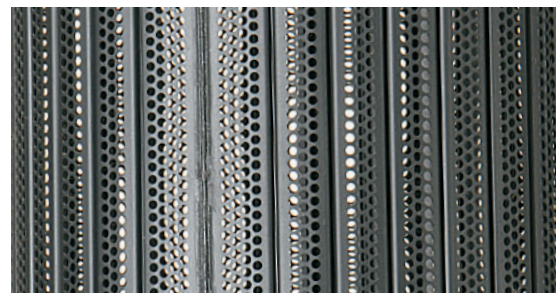
- ▶ Rice and sunflower



Round Ribbed Cylinder

Compatibility: ■

- ▶ Grain and oil seed



Trusted performance since 1930.



Oliver™

Innovate. Build. Repeat.

+1 (719) 254-7813

olivermanufacturing.com

27151 Harris Road, La Junta, CO 81050



@olivermanufacturing



@OliverMFGCO