

Reliable. Accurate. Efficient.

Voyager™ | Gravity Separator



\*Machine pictured included configurable options

**Oliver**™

Innovate. Build. Repeat.



# Voyager™ | Gravity Separator

## Voyager™ features:

### Operating control

- ▶ Built-in touchscreen, control platform (PLC) provides control of airflow, deck speed, eccentric speed, feed rate, and ability to save and load recipes
- ▶ Integrated E-STOP circuit
- ▶ Most precise adjustments on the market to fine tune your separation

### Ease of use

- ▶ Save and recall multiple recipes (such as automatic cleanout), through the HMI touchscreen
- ▶ Separate air system for operation is not required
- ▶ Dynamic controls are adjustable while machine is in operation, including: side tilt, end raise, airflow, eccentric speed, and product feed rate

### Reliability

- ▶ Over 90 years of experience in gravity table engineering and manufacturing
- ▶ UL and CUL approved electrical cabinets
- ▶ Low maintenance for reduced downtime
- ▶ Post purchase training and machine service packages available
- ▶ Spare parts are available upon order

### Performance

- ▶ Rectangular deck design with custom overcover and undercover, allows for maximum product separation time
- ▶ Reduced machine setup and cleanout time
- ▶ Efficient air zone control from initial stratification through final discharge for optimal separation performance
- ▶ Counterbalanced for smooth operation, with low noise at operator level (86db)

### Configurations

- ▶ Integration with plant SCADA is available
- ▶ Modular deck makes for ease of maintenance and quick changeover from product to product and deck to deck
- ▶ Options include: discharge hopper, partial or full dust hoods, vibratory feeder, deck configuration, recipe development, stainless steel contact points, and control packages



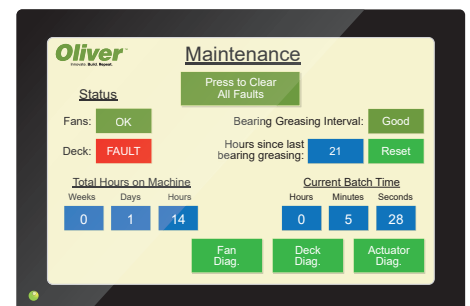
Own an Oliver today! Call (719) 254-7813.

# Specifications

Machine model ▶	GVX1020	GVX1040	GVX1050
Height	70" (178 cm)	82" (208 cm)	82" (208 cm)
Width	60" (152 cm)	67" (170 cm)	73" (185 cm)
Length	93" (236 cm)	122" (310 cm)	152" (386 cm)
Weight	2,350 lbs (1,066 kg)	3,900 lbs (1,769 kg)	4,300 lbs (1,951 kg)
Deck area	29" x 60" (74 cm x 152 cm)	39" x 85" (99 cm x 215 cm)	45" x 117" (114 cm x 297 cm)
<b>With deck hood:</b>			
Height	78" (198 cm)	86" (218 cm)	86" (218 cm)
Weight	4,500 lbs (2,041 kg)	4,500 lbs (2,041 kg)	5,500 lbs (2,495 kg)
Amp draw @480/3/60	30 amps	43 amps	51 amps
Amp draw @240/3/60	60 amps	86 amps	102 amps
Fan zones	3	3	4
Fan control	VFD	VFD	VFD
Warranty	1 year	1 year	1 year



Equipment control



Simplified maintenance

# Capacity

Machine model ▶	GVX1020			GVX1040		GVX1050	
	Bulk (lb.)	lb./hr.	CFM	lb./hr.	CFM	lb./hr.	CFM
Corn	43	3,800	8,500	8,200	13,800	12,000	19,000
Cotton seed	56	3,800	8,500	10,200	13,800	15,000	19,000
Sorghum	56	2,700	5,500	7,200	9,800	10,500	13,800
Lentils	60	2,800	5,500	7,500	9,800	11,000	13,800
Peas	60	3,300	8,500	8,900	13,800	13,000	19,000
Pinto beans	60	3,400	8,500	9,200	13,800	13,500	19,000
Soybeans	60	2,800	8,500	7,500	13,800	11,000	19,000
Wheat	60	2,800	5,500	8,200	13,800	12,000	19,000

Capacities are based on the following assumptions:

1. Machine feed rate
2. Light fraction to be removed is assumed to be 5% or less of total incoming products
3. Vary depending upon the bulk density of the product
4. These capacities are estimates only and products can be tested and confirmed at the Oliver laboratory
5. Capacities may change based on particle size and range

For more product capacities, please contact us.

What else can your Oliver do? Find out at [olivermanufacturing.com](http://olivermanufacturing.com).





**Oliver**™

Innovate. Build. Repeat.

**+1 (719) 254-7813**

[olivermanufacturing.com](http://olivermanufacturing.com)

27151 Harris Road, La Junta, CO 81050

  @olivermanufacturing